



# AFGHANISTAN EARTHQUAKE

## INTERNATIONAL ORGANIZATION FOR MIGRATION

SITUATION REPORT • 30 October 2015



### Highlights

A girl and her infant brother outside their damaged home in Jurm district, the earthquake's epicenter © IOM 2015

- A 7.5 magnitude earthquake centred in northeastern Afghanistan struck on 26 October, causing significant damage and casualties across Afghanistan, Pakistan and India.
- The Afghan government estimates that approximately 6,900 families have been affected by the earthquake, with 84 individuals killed and 394 injured. This estimate is subject to change as more areas are accessed.
- IOM has so far completed assessments in 40 districts, and aid distributions are underway for affected families in several provinces.

## Situation Overview

A 7.5 magnitude earthquake centered in Jurm district in northeastern Afghanistan's Badakhshan province struck on the afternoon of 26 October, and was felt across the region. Initial reports indicate damaged homes and potential casualties across northern, central and eastern Afghanistan, impacting 13 provinces (102 districts) in total. Badakhshan, Nangarhar, Kunar and Nooristan provinces are the most affected. Approximately 6,900 families are estimated to have been affected by the earthquake, with 84 individuals killed and 394 injured.

Assessments have been completed in 40 districts and the distribution of relief items is underway for eligible families. IOM distributed relief items to 175 families in Kunar and Laghman provinces on 30 October. Assessments are ongoing, with the majority expected to conclude by 1 November.

The main needs of the affected population are basic household supplies, blankets, tents, hygiene kits and shelters for those whose houses have been completely destroyed. Access in some of the affected areas remains a challenge due to difficult terrain and security concerns.

Support for IOM's natural disaster response operations is provided by USAID's Office of U.S. Foreign Disaster Assistance and the Government of Japan.

### CONTACTS

IOM Afghanistan

+93.794.100.546

✉ [iomkابل@iom.int](mailto:iomkابل@iom.int)

✉ [media@iom.int](mailto:media@iom.int)

🌐 <http://afghanistan.iom.int/>

## IOM RESPONSE

### East Region

#### Kunar

Thirty-five people have reportedly been killed and 113 injured, with many families losing their shelters, household items and food stocks. Initial reports suggest 1,264 families affected in 15 districts. Joint assessment teams consisting of IOM, WFP, ANDMA, ARCS, RRD, IMC, NRC and DRC are assessing the impact and identifying the immediate needs of the affected families. So far, 325 families have been identified in 13 districts, while assessments in the remaining villages are ongoing. IOM distributed NFIs, emergency shelter and solar lanterns to 65 families in Wata Pur district on 30 November.

#### Nooristan

Initial reports collected through provincial and district authorities indicate 813 families affected, with six persons killed and 76 injured in eight districts. A joint assessment was initiated by IOM, IMC, ARCS and WFP on 28 October. Eighty-six families have been verified as in need of relief items. Some of the affected families have already received assistance.

Access and communication to Kamdesh and Barge Matal districts remains a challenge due to security concerns and difficult terrain. IMC, though its basic and central health clinics, will be conducting assessments in these two districts. The initial reports also suggest damage to public infrastructure including schools, clinics, government facilities as well as livelihood means.

Access to Dawab and Mandol districts was not possible through Nooristan center (Parun). The joint team (IOM and IMC) had to take an alternate route through Laghman province to access these districts. Security and transportation obstacles resulted in delayed assessment.

#### Laghman

Initial reports indicate 254 families affected, with six persons killed and 25 injured in five districts. Joint assessment teams consisting of IOM, WFP, ANDMA, RRD, IRC, DRC, DoRR and DoAIL initiated assessments on 28 October.

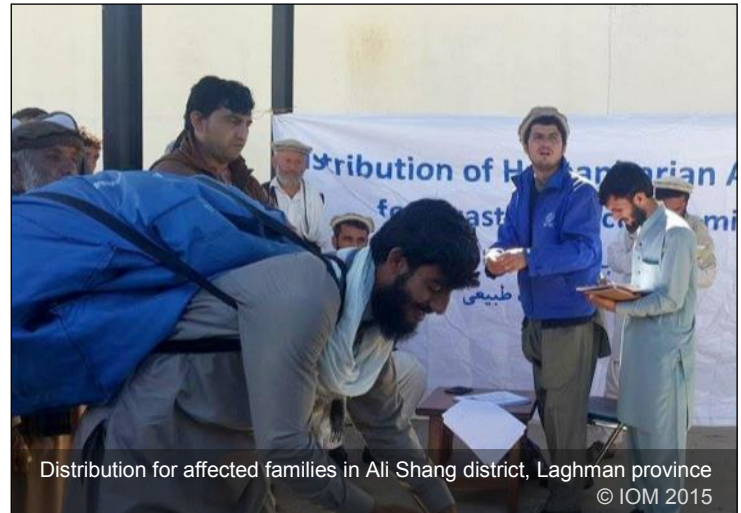
So far, 239 families have been identified as in need as assistance in Ali Shang, Alingar, Dawlatshah, Qarghy and Mehtarlam districts by joint assessment teams consisting of IOM, IRC, ARCS and RRD. IOM distributed NFIs, family tents and solar lanterns to 110 families in Wata Pur district on 30 November.

#### Nangarhar

Initial reports indicate 1,426 families affected, with 23 persons killed and 103 individuals injured in 16 districts. A joint assessment team consisting of IOM, WFP, SCI, ARCS, NRC, IMC, DRC, NRC, RRD, ANDMA, and Bayat Foundation initiated joint assessments on 28 October.

So far, 644 families have been verified by joint assessment teams in 13 affected districts. ARCS and RRD distributed relief

items in Rodat, Behsood and Batikot districts. Security constraints exist in Mohmand Dara, Dur Baba and Gushta districts, delaying assessments in some of the affected villages. Baswal village in Mohmand Dara district is currently inaccessible.



### Central Region

#### Kabul

As per the initial information from stakeholders, no severe damage to houses in Kabul city was reported. However, there are reports of casualties and damage in Deh Sabz and Bagrami districts.

IOM is conducting assessments with partners in Parwan, Kapisa and Panjshir provinces, and will initiate assessments in Kabul when the assessments in the abovementioned provinces conclude.

#### Parwan

Initial reports indicate 565 families affected and two killed in eight districts. Joint assessment teams comprised of IOM, CARE, IDSH/WFP, ARCS, ANDMA and DRC initiated assessments on 27 October in the affected districts. Assessments in all districts have been concluded, with 371 families confirmed to be affected in need of relief items. Distributions are planned on 1 November.

#### Panjshir

One hundred and sixty-eight families were reportedly affected and four persons injured in five districts. Joint assessment teams consisting of IOM, CARE, ARCS, IDSH/WFP, ANDMA and DRC were deployed to the affected districts on 28 October. The assessments in these five districts have been completed, and 302 families were found to be affected. There are also reports of damage in Rokha, Anaba and Shutul districts. The joint assessment team will visit these districts on 31 October.



**Kapisa**

Initial reports indicate 125 families affected in Nijrab district. A joint assessment team consisting of IOM, ARCS, ANDMA, DoRR, RRD and IDSH/WFP initiated assessment on 29 October. So far, 53 families have been found to be affected. Assessment activities will continue on 31 October.

**Northeast Region**

**Badakhshan**

Initial reports indicate around 1,900 families affected, with seven persons killed and six injured in 17 villages. Joint assessment teams comprised of IOM, WFP, ANDMA, FOCUS, AfghanAid, NAC, CAF, ARCS, AKF, COAR, CONCERN and ROPANI initiated assessments on 28 October. So far, 1,742 families have been found to be affected. Assessments in Ishkashim, Yawan, Shuhada, Khash, Argo and Arghanj Khawa districts have concluded, and relief items have been distributed to some families.

Assessments of Such Bala, Payan and Deh Bala Farghamanj villages in Jurm district, the epicenter of the earthquake, are complete, in while assessments are ongoing in Eeskan, Khostak and Jurm center villages by ARCS, as these villages are insecure. Access and communication in Wardoj and Raghitan districts remains a challenge due to security concerns and ongoing conflict.

**Baghlan**

Initial reports indicate 392 families affected and 18 persons injured in nine districts. Joint assessment teams comprised of IOM, ANDMA, FOCUS, WFP and ARCS initiated assessment on 27 October. Assessments in seven districts have been completed, while the assessments in Andaraba and Firing districts are ongoing. A total of 954 families were found to be affected and in need of food, hygiene kits and shelter.

**Takhar**

Initial reports indicate 196 families affected, with four killed and 40 injured in seven districts. A joint assessment team consisting of ANDMA, ACTED, Mission East, WFP, PAT and ARCS initiated assessment on 27 October. So far, 237 families were found to be affected, with assessments in the affected districts ongoing. IOM deployed field staff to Takhar to assist ANDMA and joint teams with assessment and coordination.



Damage in Jurm district, Badakhshan, the earthquake's epicenter © IOM 2015

**Southeast Region**

**Paktia, Ghazni and Khost**

According to initial reports, 47 families are affected in three provinces. A joint assessment team consisting of IOM, IRC, ANDMA, CARE, PIN, ARCS and DoA initiated assessment on 28 October. So far, 43 families were found to be affected, with assessments in some districts ongoing.

IOM natural disaster response operations are supported by:



**Earthquake Update (30-Oct-2015)**

S/N	Province	District	Assessment Team	Assessment Date	Agency Leading Team	Initial Reported Families	Deaths	Injuries	Families Assessed & Eligible	Severely damaged houses	Completely destroyed houses	Assistance Recommended	Assistance Provider	Date of Distribution	Status				
1	Badakhshan		IOM, WFP, FOCUS, ANDMA, ARS	28-Oct-15	IOM	480	0	1	159	107	52	Shelter, NFI and Food, Cash	IOM, WFP, Afghan Aid, SCI, ANDMA	30-Oct-15	Assessment done in Such Bala, Payan & Delh Bala Farghamji villages. Assessment ongoing by ARCS				
		Jurm															Assessment done in Darma rakt and Chasnood Payan villages. Assessment ongoing		
		Ghughnan	FOCUS, DDA											Shelter, NFI, Cash and Food	IOM, WFP, FOCUS		Assessment and distribution done		
		Arghani Khawa	ARCS, DDA											Food, food and NFI	ARC Qatar & Arghani	28-Oct-15	Assessment ongoing		
		Darawayem	Alghan Aid, ANDMA											Tents, food and Cash	ANDMA, WFP	28-Oct-15	Assessment ongoing		
		Argo	Alghan Aid, NAC											Food and NFI, Cash	ANDMA, WFP	29-Oct-15	Assessment done		
		Teshkan	Alghan Aid, CAF, ACTED											Food and NFI, Cash	IOM, WFP		Assessment ongoing		
		Kishim	IOM, WFP, ANDMA											Tents, food and NFI	IOM, WFP, ANDMA		Assessment ongoing		
		Khash	Alghan Aid														Not recommended for assistance	Assessment done	
		Khan Wa Manjan	FOCUS, ARCS, AKF											Food and NFI, Cash	IOM, WFP		Assessment ongoing		
		Yamgan	FOCUS, ARCS											Food and NFI, Cash	IOM, WFP, ANDMA		Assessment ongoing		
		Baharak	Alghan Aid, AKF											Food and NFI, Cash	IOM, WFP		Assessment ongoing		
		Wardoj	Alghan Aid, ARCS														Assessment ongoing. No communication with the assessment team, AGES presence		
		Shuhake	Alghan Aid, COAR											Food and NFI, Cash	IOM, WFP, COAR, ANDMA		Assessment done		
		Yawan	CONERN, NAC											Food and NFI, Cash	CONERN, NAC		Assessment done		
		Raghistan	CONERN														Assessment pending due to ongoing conflict, No initial information of the damages		
		Zebak	FOCUS, ROPANI											Food and NFI, Cash	FOCUS, ANDMA		Assessment done		
		Ishkashim	FOCUS, ROPANI											Food and NFI, Cash	FOCUS, ANDMA, AKF	29-Oct-15	Assessment done		
		<b>Total</b>						<b>1,899</b>	<b>7</b>	<b>6</b>	<b>1,742</b>	<b>414</b>	<b>1,306</b>						
		2	Nangarhar		Momanandara	IOM WFP, SCI	28-Oct-15	IOM	21	1	1	36		36	Shelter, NFI and Food	IOM, WFP		Assessment ongoing	
Dar Baba																Assessment ongoing			
Rodat														Tents, food and NFI		28-Oct-15	Assessment ongoing: ARCS distributed 30 tents and NFI to 30 families		
Bekhadod	ARCS													Tents, food and NFI	ARCS	28-Oct-15	Assessment ongoing : ARCS distributed 50 tents and NFI to 50 families		
Shezad														NFI, food and shelter			Assessment ongoing		
Khogeani														Shelter, NFI and Food			Assessment ongoing		
Kot														Shelter, NFI and Food			Assessment ongoing		
Khewa	NRC, IMC													Shelter, NFI and Food	NRC		Assessment ongoing		
Surkhrod	DRC, SCI													Shelter, NFI and Food	DRC		Assessment ongoing		
Gushta	NRC, IMC, IOM													Shelter, NFI and Food	NRC		Assessment ongoing		
Chaprehar	RRD, ANDMA													Shelter, NFI and Food			Assessment ongoing		
Bati Kot														Shelter, NFI and Food			Assessment ongoing : RRD distributed NFIs and tents to 30 families		
JAA city	NRC, IOM, IMC, SCI													Shelter, NFI and Food	NRC		Assessment ongoing		
Kama	Bayat Found, Islamic Relief													Shelter, NFI and Food	Bayat Found, Isl Relief		Assessment ongoing		
Dari Noor	WFP IRC													Shelter, NFI and Food	IRC, WFP		Assessment ongoing		
Ghani Khil	IRC, WFP										NFI and Food	IRC, WFP		Assessment ongoing					
<b>Total</b>						<b>1,246</b>	<b>23</b>	<b>103</b>	<b>644</b>	<b>362</b>	<b>282</b>								
3	Laghman	Alishang	IOM, WFP, ANDMA, RRD	27-Oct-15	IOM	74	2	45	37	8	8	Shelter, NFI and Food	IOM, WFP		Assessment ongoing				
		Aingar	ARCS	28-Oct-15	ARCS	60	2	10	100	88	12	12	Shelter, NFI and Food	ARCS	28-Oct-15	Assessment ongoing : but ARCS distributed tents and NFI for 60 families			
		Dawlatbaha	RRD, WFP, ANDMA	28-Oct-15	ANDMA	84	3	6	52	24	2	2	Shelter, NFI and Food	RRD, WFP		Assessment ongoing			
		Mehtarlam	IRC, DRC, ANDMA, RRD, DORR, DAIL, IMC	27-Oct-15	IRC	30		4	26	24	2	2	Shelter, NFI and Food	IRC, WFP		Assessment Done			
		Qarghly	IRC, DRC, ANDMA, RRD, DORR, DAIL, IMC	27-Oct-15	IRC	6	1	3	16	16	16	16	Shelter, NFI and Food	IRC, WFP		Assessment ongoing			
<b>Total</b>						<b>254</b>	<b>6</b>	<b>25</b>	<b>239</b>	<b>149</b>	<b>90</b>								
4	Kunar	Wata Pur	IOM, WFP, ANDMA	27-Oct-15	IOM	45	1	1	65	53	12	Shelter, NFI and Food	IOM, WFP		Assessment ongoing : IOM will distribute on 30-Oct-15				
		Dara Pech				100	3	11							Assessment ongoing				
		Chapa Dara				45	1	4							Assessment ongoing				
		Dangam	ARCS, RRD			13			11	8	3	6		6	Shelter, NFI and Food	ARCS		Assessment ongoing	
		Ghani Abad				100	2	28	28	22	6	6		6	Shelter, NFI and Food			Assessment ongoing	
		Nary				100	2	6	11	10	1	1		1	1	Shelter, NFI and Food			Assessment ongoing
		Asmar				118	2	11	11	11	11	11		11	11	Shelter, NFI and Food			Assessment ongoing
		Shegal				108	1	1	30	30						NFI and Food		29-Oct-15	Assessment ongoing : IMC did response for 20 Families in term of NFI
		Marawara	IMC, WFP, ANDMA			30	2	34	34	34						NFI and Food	IMC, WFP	29-Oct-15	Assessment ongoing : IMC did response for 30 Families in term of NFI
		Sarkano				168	6	4	19	18	1	1		1	1	Shelter, NFI and Food			Assessment ongoing : IMC did response for 14 Families in term of NFI, ANDMA distributed one tent
Asad Abad		80	3	25	25	25					NFI and Food			Assessment ongoing					
Khas Kunar		137	1	11	11	11					NFI and Food			Assessment ongoing					
Nurgal	NRC, ANDMA, DRC	50	10	3	3	3					NFI and Food	NRC, WFP		Assessment ongoing					
Narang		120	6	4	27	27					NFI and Food			Assessment ongoing					
Chawki		50	16	32	50	50					Shelter, NFI and Food			Assessment ongoing					
<b>Total</b>						<b>1,264</b>	<b>35</b>	<b>113</b>	<b>325</b>	<b>291</b>	<b>34</b>								
5	Nooristan	Wama		28-Oct-15	IMC	82	13	32	32	29	2	NFI and food	IMC, WFP	29-Oct-15	Assessment ongoing : IMC did response for 30 families in term of NFI				
		Mandol	IOM, IMC, WFP, IOM			105	16								Assessment ongoing				
		Do Ab				81	7								Assessment ongoing				
		Nurgram				140	3	5	9	9					Assessment ongoing				
		Wagal	ARCS			142	4	4	4	4					Assessment ongoing				
Parun		95	11	45	21	24				Shelter, NFI and Food			Assessment ongoing						
Kamish	IMC through BHC and CHC	86	1	12								IMC		Assesment not initiated, access constraints (security and difficult terrain)					
Bargi Matal	IMC through BHC and CHC	82	2	8															
<b>Total</b>						<b>813</b>	<b>6</b>	<b>76</b>	<b>86</b>	<b>51</b>	<b>35</b>								
6	Parwan	Salang	IOM, CARE, WFP/IDSH, ARCS	27-28 Oct 2015		80			52	37	15				Assessment Done				
		Jabalsiraj		27-28 Oct 2015		30			20	8	2				Assessment Done				
		Said khill	IOM, CARE, IDSH/WFP, ARCS, ANDMA, DRC	27-28 Oct 2015		150	11	10	10	10	94	94			Assessment Done				
		Charikar		27-28 Oct 2015		150	247	153	94						Assessment Done				
		Sorkhi Parsa		27-28 Oct 2015		120	0	0	0	0	0	0			Assessment done, No families found affected				
		Shinwari		27-28 Oct 2015		10	1	4	0	4	4	4			Assessment Done				
		kohi Safi	IOM, CARE, WFP/IDSH, ARCS	27-28 Oct 2015		18	18	0	18	18	18	18			Assessment Done				
		Bagram	IOM, CARE, WFP/IDSH, ARCS	27-28 Oct 2015		107	1	19	9	10	10	10			Assessment Done				
<b>Total</b>						<b>565</b>	<b>2</b>	<b>0</b>	<b>371</b>	<b>217</b>	<b>144</b>								
7	Panjshir	Bazarak	IOM, IDSH/WFP, ARCS, ANDMA, CARE	27-28 Oct 2015		30	1	87	50	37					Assessment Done				
		Dara	IOM, CARE, ARCS, IDSH/WFP, ANDMA, DRR	27-28 Oct 2015		25	20	12	8						Assessment Done				
		Abshar		27-28 Oct 2015		44	51	35	16						Assessment Done				
		Paryan	CARE, ANDMA, DoRR	29-Oct-15		50	74	30	44						Assessment Done				
Hese Awal	IOM, IDSH/WFP, ARCS, ANDMA, CARE	29-Oct-15		19	3	70	45	25						Assessment Done					
<b>Total</b>						<b>168</b>	<b>4</b>	<b>302</b>	<b>172</b>	<b>130</b>									
8	Kapisa	Njrab	IOM, ARCS, ANDMA, DoRR, RRD, IDSH/WFP	29-Oct-15		125	0	0	53	28	25				Assessment ongoing				
		<b>Total</b>						<b>125</b>	<b>0</b>	<b>0</b>	<b>53</b>	<b>28</b>	<b>25</b>						
9	Baghlan	Khinjjan	Joint Assessment/Reported BY WFP and ANDMA	27-Oct-15	Jointly	23	0	3	106	57	49	Food, Hygiene kit and Shelter to Completely Destroyed Houses			Assessment Done				
		Doshi	Joint Assessment/Reported BY WFP	27-Oct-15	Jointly	17	0	0	25	13	12	12	Food, Hygiene kit and Shelter to Completely Destroyed Houses			Assessment ongoing			
		Dahni Ghuri	ARCS	27-29 Oct.15	Jointly	30	0	0	119	107	12	12	Food, Hygiene kit and Shelter to Completely Destroyed Houses			Assessment Done			
		Barka	ARCS	27-Oct-15	Jointly	15	0	0	22	0	22	22	Food, Hygiene kit and Shelter to Completely Destroyed Houses			Assessment Done			
		Nahrin	ARCS	27-Oct-15	Jointly	50	0	0	10	0	10	10	Food, Hygiene kit and Shelter to Completely Destroyed Houses			Assessment Done			
		District 3	FOCUS, IOM, WFP, ANDMA	27-28 Oct.15	IOM	Unknown Number	0	1	5	4	1	1	Food, Hygiene kit and Shelter to Completely Destroyed Houses			Assessment Done			
		District 2	FOCUS, IOM, WFP, ANDMA	27-28 Oct.15	IOM	Unknown Number	0	9	88	64	24	24	24	Food, Hygiene kit and Shelter to Completely Destroyed Houses			Assessment Done		
		District 1	Acted, ARCS, ANDMA, Shura	27-29 Oct.15	ANDMA	Unknown Number	0	2	350	176	174	174	174	Food, Hygiene kit and Shelter to Completely Destroyed Houses			Assessment Done		
		District 6	FOCUS, IOM, WFP, ANDMA	29 Oct.15	IOM	17	0	0	7	5	2	2	2	Food, Hygiene kit and Shelter to Completely Destroyed Houses			Assessment Done		
		Dand Ghori	ARCS	28 Oct.15	ARCS	Unknown Number	0	0	105	80	25	25	25	Food, Hygiene kit and Shelter to Completely Destroyed Houses			Assessment Done		
Andaraba	Joint Team	27-29 Oct.15	ANDMA	200	0	3	117	89	28	28	28	Food, Hygiene kit and Shelter to Completely Destroyed Houses			Only Bano completed other places of ANDARABA ongoing				
Firing	Joint Team	27-29 Oct.15	ANDMA	40	0	0	0	0	0	0	0	Pending			Assessment ongoing				
<b>Total</b>						<b>392</b>	<b>0</b>	<b>18</b>	<b>954</b>	<b>595</b>	<b>359</b>								
10	Takhar	Talqan City	Joint Assessment Team	27-28 Oct 2015	Joint Team	45	2	36	58	43	15	NFI, shelter	UNICEF 43 NFI, Concern 15	30-Oct-15	Assessment ongoing in 4 villages in Talqan,				
		Farkhar	Joint Assessment	27-Oct-15	Concern Worldwide	32	1	0	46	28	18	18	Shelter, NFI and Food	ANDMA, Concern worldwide	28-Oct-15	Only 27 families received assistance so far			
		Rostaq	Joint Assessment	28-Oct-15	Jointly	36										Assessment ongoing			
		Bamak Ab	ANDMA, Acted Mission East, ARCS																



IOM International Organization for Migration  
 سازمان بین المللی مهاجرت  
 د مهاجرت نړیوال سازمان

IOM-Humanitarian Assistance Programme (HAP)

Stock Update Countrywide (30 Oct 2015)

Region	Warehouse	Winter Kit	Family Revitalisation Kit	Emergency Shelter Kit	Tarpaulin	Blanket Module	Household Module	Winter Clothing Module	Solar Module	Family Tent
Central	Kabul	1	29	336	0	1,933	348	1,497	3,483	372
	Logar	0	0	272	0	154	150	4	0	0
<b>Total</b>		<b>1</b>	<b>29</b>	<b>608</b>	<b>0</b>	<b>2,087</b>	<b>498</b>	<b>1,501</b>	<b>3,483</b>	<b>372</b>
Central Highland	Bamyan Centre	0	0	654	0	1,363	794	569	595	197
	Daikundi-Nilli	0	0	405	33	1,128	484	644	628	0
	Daikundi Ashterlai	0	0	0	0	0	0	0	0	0
	Lal Wa Sare Jungle	0	0	248	0	469	246	209	211	0
<b>Total</b>		<b>0</b>	<b>0</b>	<b>1,307</b>	<b>33</b>	<b>2,960</b>	<b>1,524</b>	<b>1,422</b>	<b>1,434</b>	<b>197</b>
Northeast	Badakshan-Faizabad	144	22	312	0	797	115	184	140	85
	BDK-Ishkashim-FOCUS	200	0	0	0	0	0	0	0	0
	BDK-Wakhan-FOCUS	0	0	0	0	100	0	100	0	0
	BDK-Sheghnan-FOCUS	0	0	0	0	100	0	100	0	0
	BDK-Shukai-FOCUS	100	0	0	0	0	0	0	0	0
	BDK-Nussai-FOCUS	100	0	0	0	0	0	0	0	0
	BDK-Maymai-FOCUS	100	0	0	0	0	0	0	0	0
	Badakshan-Ishkashim	500	0	0	0	0	0	0	0	0
	Kunduz	0	0	0	0	0	0	0	0	0
Takhar-Taloqan	586	0	200	0	295	140	0	182	0	
<b>Total</b>		<b>1,730</b>	<b>22</b>	<b>512</b>	<b>0</b>	<b>1,292</b>	<b>255</b>	<b>384</b>	<b>322</b>	<b>85</b>
Southeast	Ghazni	0	0	0	0	90	70	90	100	10
	Paktia-Gardez	46	0	608	0	1,127	600	427	400	140
<b>Total</b>		<b>46</b>	<b>0</b>	<b>608</b>	<b>0</b>	<b>1,217</b>	<b>670</b>	<b>517</b>	<b>500</b>	<b>150</b>
West	Herat	21	1	223	2,781	1,350	923	450	421	230
	Ghor-Chaghcharan	14	183	0	0	22	0	22	0	0
	Farah	0	0	200	0	114	14	100	0	0
	Badgish	0	5	105	0	82	32	50	82	0
<b>Total</b>		<b>35</b>	<b>189</b>	<b>528</b>	<b>2,781</b>	<b>1,568</b>	<b>969</b>	<b>622</b>	<b>503</b>	<b>230</b>
East	Jalalabad	550	2	722	1,200	655	209	541	624	126
<b>Total</b>		<b>550</b>	<b>2</b>	<b>722</b>	<b>1,200</b>	<b>655</b>	<b>209</b>	<b>541</b>	<b>624</b>	<b>126</b>
North	Mazar	206	174	540	22	567	413	800	301	481
	Faryab	0	336	478	0	177	0	0	0	0
<b>Total</b>		<b>206</b>	<b>510</b>	<b>1,018</b>	<b>22</b>	<b>744</b>	<b>413</b>	<b>800</b>	<b>301</b>	<b>481</b>
South	Kandahar	348	0	520	281	1,203	724	386	604	227
<b>Total</b>		<b>348</b>	<b>0</b>	<b>520</b>	<b>281</b>	<b>1,203</b>	<b>724</b>	<b>386</b>	<b>604</b>	<b>227</b>
<b>Grand Total</b>		<b>2,916</b>	<b>752</b>	<b>5,823</b>	<b>4,317</b>	<b>11,726</b>	<b>5,262</b>	<b>6,173</b>	<b>7,771</b>	<b>1,868</b>

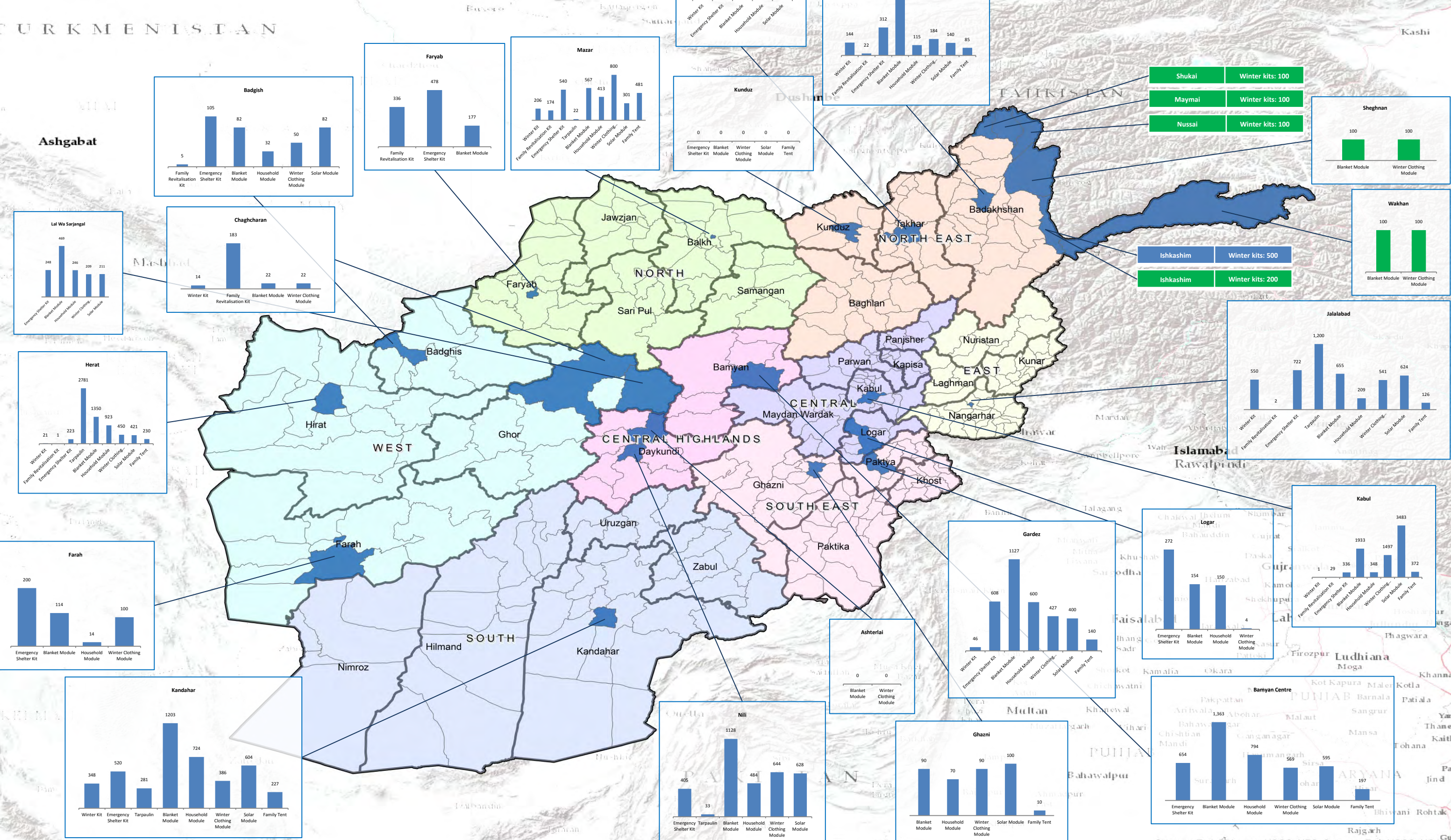


# AFGHANISTAN IOM Humanitarian Assistance Program (HAP) Stock update at 29 October 2015 – by District

**Disclaimer and Source:** Data is sourced from IOM Humanitarian Assistance Database (HADB). This map is compiled by IIMAP. Datum/Projection: WGS84/Geographic. Date created: 29/10/2015. IIMAP in Afghanistan is funded by The United States Agency for International Development (USAID)/ Office of U.S. Foreign Disaster Assistance (OFDA). The data, boundaries and names and the designations used on this map do not imply official endorsement or acceptance by IIMAP or USAID/OFDA. All information is the best available at the time this map was produced. For copies or information regarding specific data sources and methodology: [Afghanistan@immap.org](mailto:Afghanistan@immap.org).

**Legend**

- District with IOM warehouse presence
- Warehouse managed by FOCUS



Sources: Esri, DeLorme, USGS, NRS, Sources: Esri, USGS, NOAA

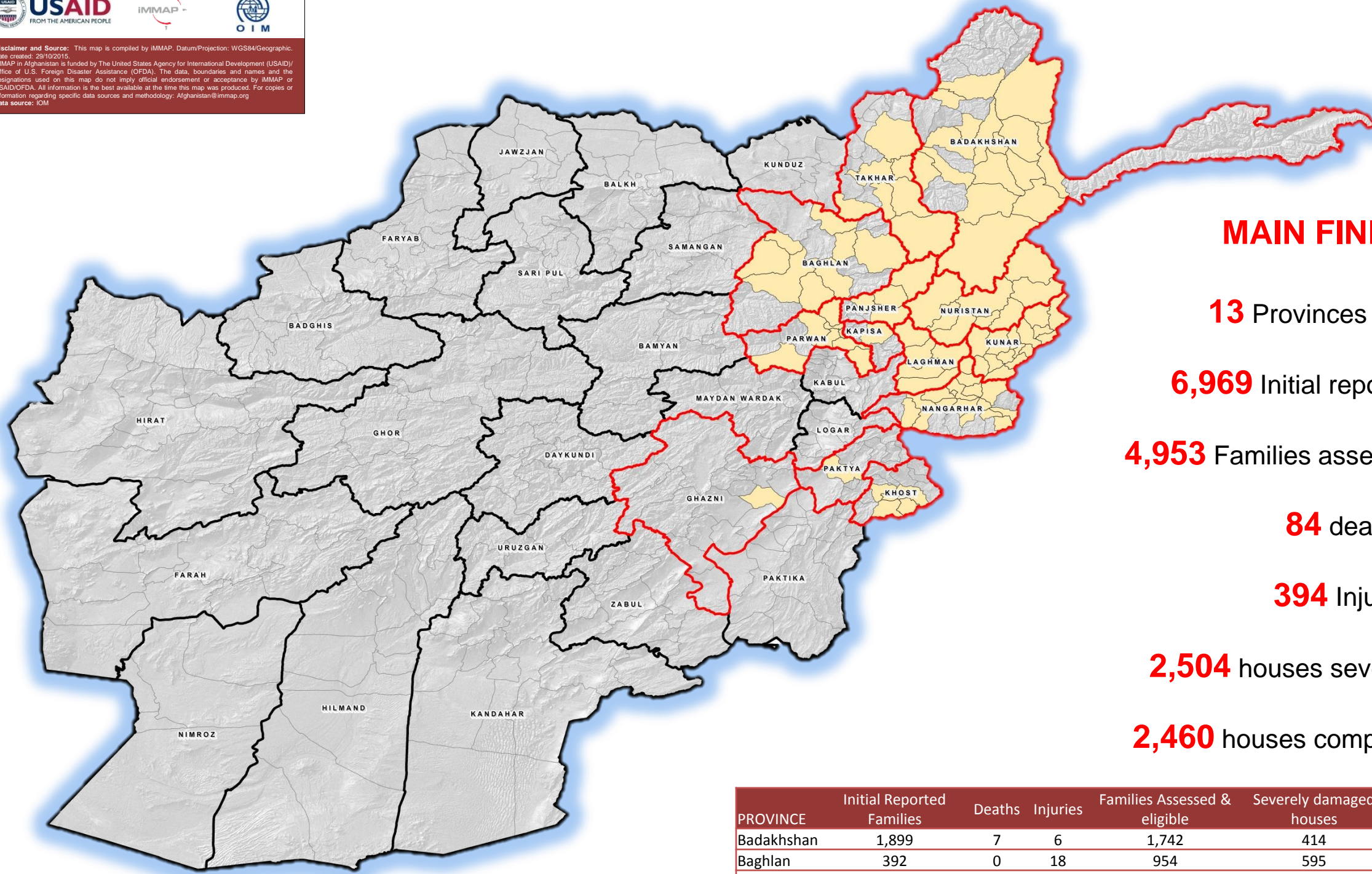


**USAID**  
FROM THE AMERICAN PEOPLE

**IOM**  
O I M

**IMMAP**

Disclaimer and Source: This map is compiled by IMMAP. Datum/Projection: WGS84/Geographic. Date created: 29/10/2015. IMMAP in Afghanistan is funded by The United States Agency for International Development (USAID)/ Office of U.S. Foreign Disaster Assistance (OFDA). The data, boundaries and names and the designations used on this map do not imply official endorsement or acceptance by IMMAP or USAID/OFDA. All information is the best available at the time this map was produced. For copies or information regarding specific data sources and methodology: Afghanistan@immap.org Data source: IOM



**MAIN FINDINGS**

**13** Provinces assessed

**6,969** Initial reported families

**4,953** Families assessed and eligible

**84** deaths

**394** Injuries

**2,504** houses severely damaged

**2,460** houses completely destroyed

**LEGEND**

- Province assessed**
- Badakhshan
  - Nangarhar
  - Parwan
  - Khost
  - Baghlan
  - Nuristan
  - Takhar
  - Ghazni
  - Paktya
  - Kunar
  - Kapisa
  - Panjsher
  - Laghman
- District assessed**

PROVINCE	Initial Reported Families	Deaths	Injuries	Families Assessed & eligible	Severely damaged houses	Completely destroyed houses
Badakhshan	1,899	7	6	1,742	414	1,306
Baghlan	392	0	18	954	595	359
Ghazni	1	1	0	0	1	0
Kapisa	125	0	0	53	28	25
Khost	36	0	7	0	29	7
Kunar	1,264	35	113	325	291	34
Laghman	254	6	25	239	149	90
Nangarhar	1,246	23	103	644	362	282
Nuristan	813	6	76	86	51	35
Paktya	10	0	2	0	5	1
Panjsher	168	0	4	302	172	130
Parwan	565	2	0	371	217	144
Takhar	196	4	40	237	190	47
<b>TOTAL</b>	<b>6,969</b>	<b>84</b>	<b>394</b>	<b>4,953</b>	<b>2,504</b>	<b>2,460</b>

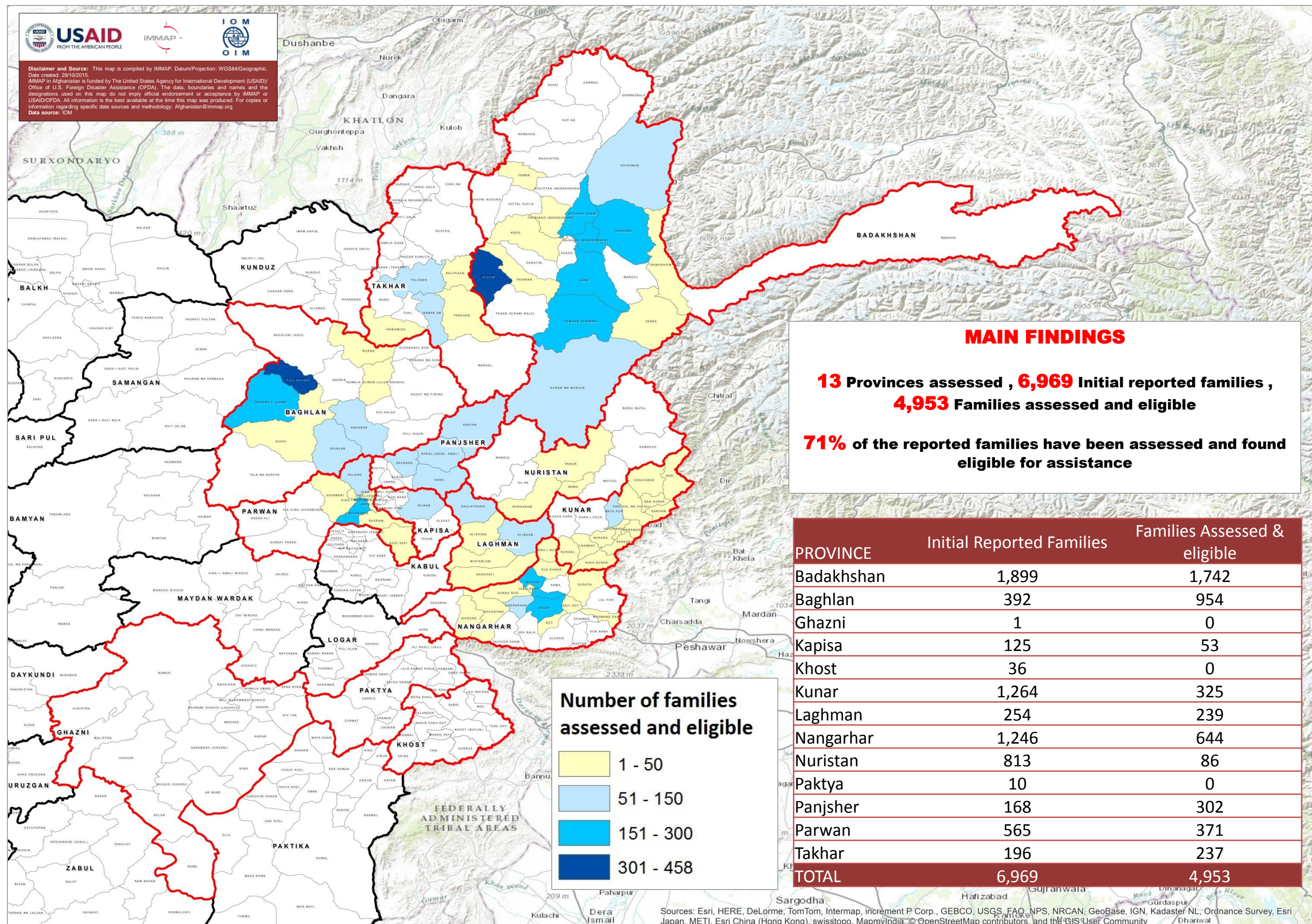


**USAID**  
FROM THE AMERICAN PEOPLE

**IMMAP**

**IOM**  
O I M

Disclaimer and Source: This map is compiled by IMMAP. Datum/Projection: WGS84/Geographic. Date created: 29/10/2015. IMMAP in Afghanistan is funded by The United States Agency for International Development (USAID)/ Office of U.S. Foreign Disaster Assistance (OFDA). The data, boundaries and names and the designations used on this map do not imply official endorsement or acceptance by IMMAP or USAID/OFDA. All information is the best available at the time this map was produced. For copies or information regarding specific data sources and methodology: Afghanistan@immap.org Data source: IOM



**MAIN FINDINGS**

**13** Provinces assessed , **6,969** Initial reported families ,  
**4,953** Families assessed and eligible

**71%** of the reported families have been assessed and found eligible for assistance

PROVINCE	Initial Reported Families	Families Assessed & eligible
Badakhshan	1,899	1,742
Baghlan	392	954
Ghazni	1	0
Kapisa	125	53
Khost	36	0
Kunar	1,264	325
Laghman	254	239
Nangarhar	1,246	644
Nuristan	813	86
Paktya	10	0
Panjsher	168	302
Parwan	565	371
Takhar	196	237
<b>TOTAL</b>	<b>6,969</b>	<b>4,953</b>

**Number of families assessed and eligible**

- 1 - 50
- 51 - 150
- 151 - 300
- 301 - 458

Sources: Esri, HERE, DeLorme, TomTom, Intermap, increment P Corp., GEBCO, USGS, FAO, NPS, NRCAN, GeoBase, IGN, Kadaster NL, Ordnance Survey, Esri Japan, METI, Esri China (Hong Kong), swisstopo, MapmyIndia, © OpenStreetMap contributors, and the GIS User Community