

FIRST FLOOR PLAN

MINISTRY OF EDUCATION  
DEPARTMENT OF CONSTRUCTION

STANDARD SCHOOL DESIGN  
IN AFGHANISTAN

ARCHITECT/DESIGN	AH NAKILA AFZALI	APPROVED-Doc/Moc	ENG ABDULMOHSEN RAD
STRUCTURE/DESIGN	ENG FATEMA ZEVARI	SCALE	As shown (A3)
TECH-APPROVED BY	ENG AR MATIN MAQOOL	REVISED DATE	JULY 2014

DRAWING TYPE	ARCHITECTURE
CODE NO	S-0254

2  
13

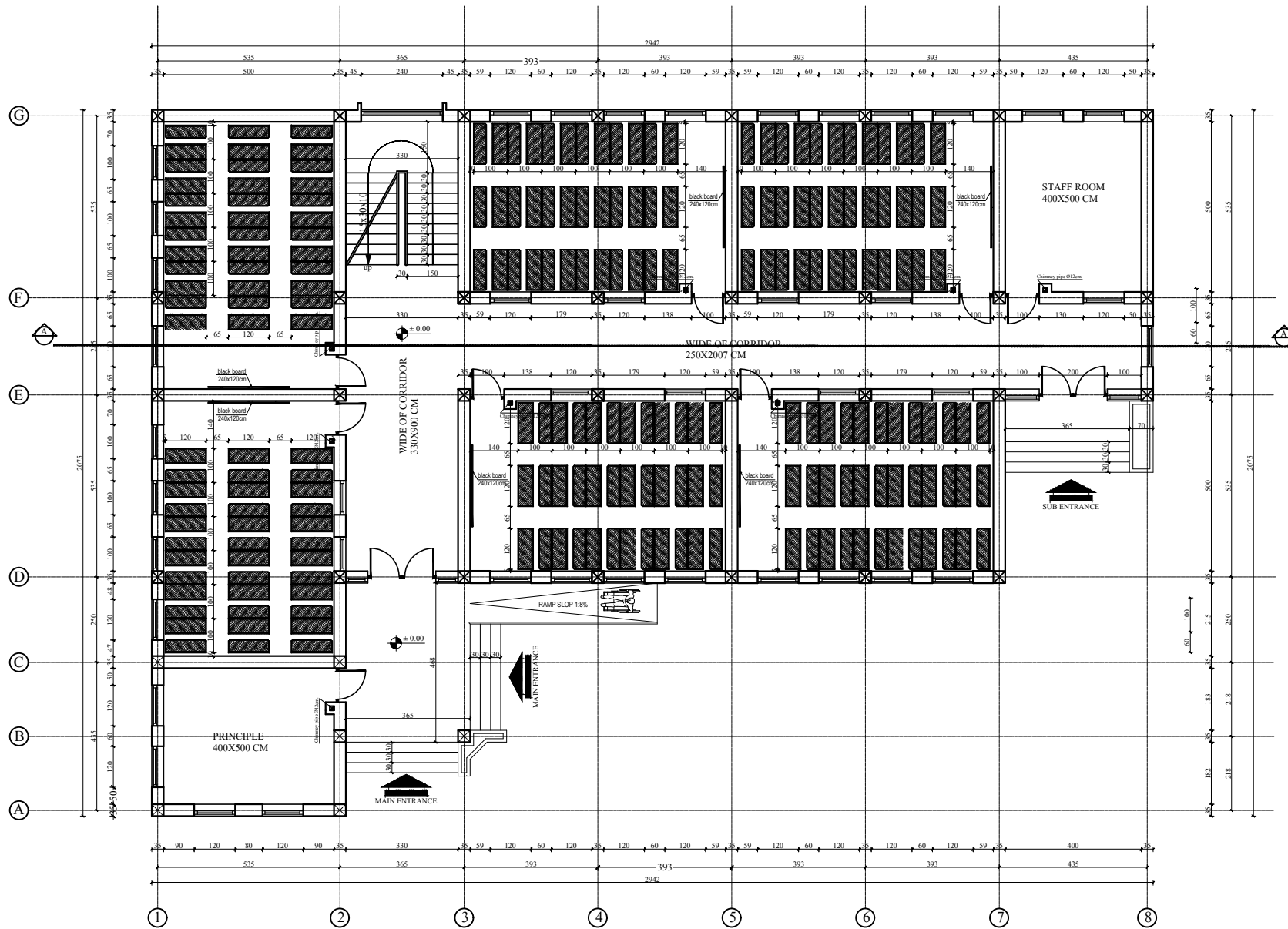
PROJECT NAME

PROJECT TYPE/DRAWING TITLE

6 CLASS ROOM / FIRST FLOOR PLAN







FURNATURE PLAN

MINISTRY OF EDUCATION  
DEPARTMENT OF CONSTRUCTION

# STANDARD SCHOOL DESIGN IN AFGHANISTAN

ARCHITECT/DESIGN	AH NAKILA AFZALI	APPROVED-Doc/Moc	ENG.ABDULMOHMEN B.AID
STRUCTURE/DESIGN	ENG.FATEMA ZEWARDI	SCALE	As shown (A3)
TECH- APPROVED BY	ENG.AHMATIN MAQOOL	REVISED DATE	JULY 2014

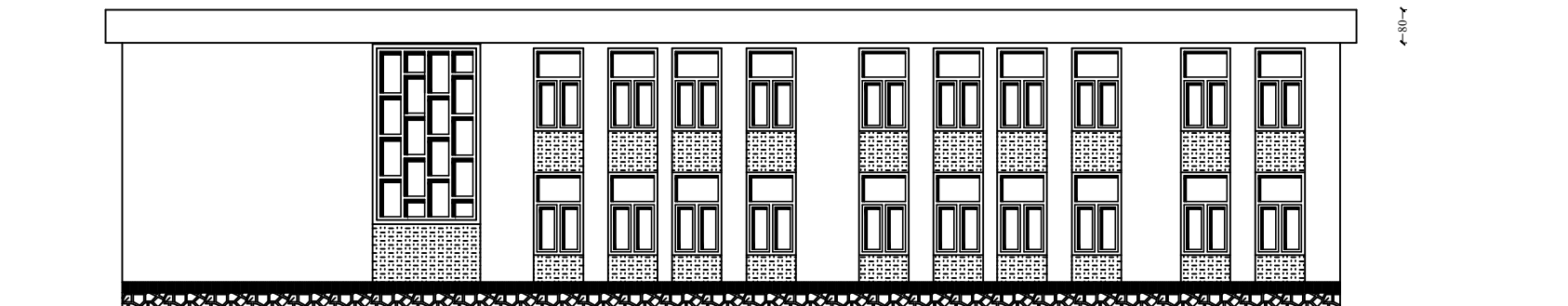
DRAWING TYPE	ARCHITECTURE
CODE NO	S-0254

2
13

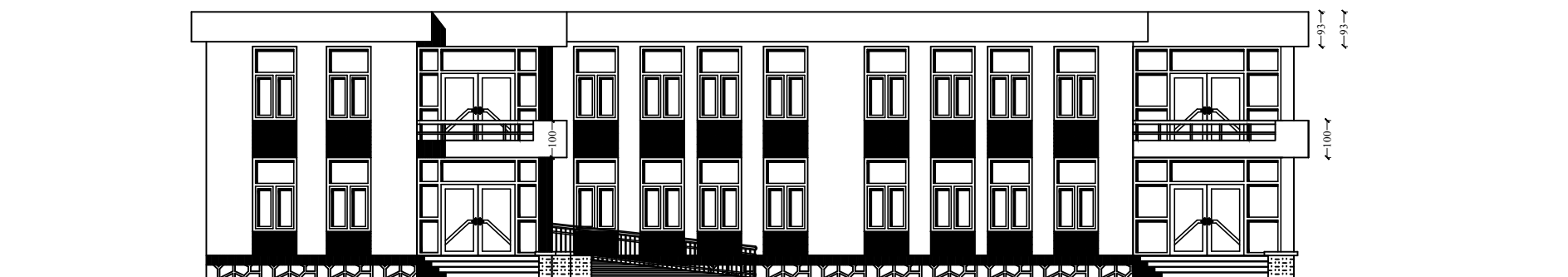
PROJECT NAME	
PROJECT TYPE/DRAWING TITLE	6 CLASS ROOM /FURNITURE PLAN







BACK ELEVATION



FRONT ELEVATION

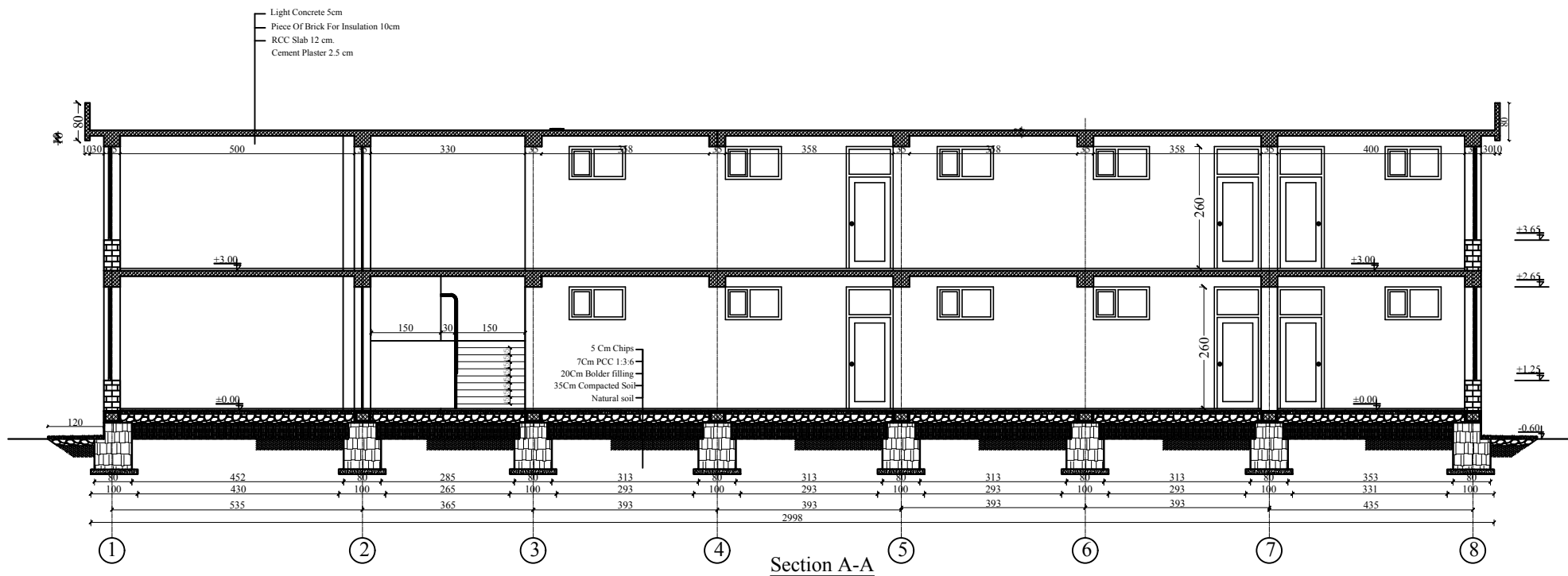
MINISTRY OF EDUCATION  
DEPARTMENT OF CONSTRUCTION

# STANDARD SCHOOL DESIGN IN AFGHANISTAN

ARCHITECT/DESIGN	AH.NAKILA AFZALI	APPROVED Doc/Moc	ENG ABDULMOHMEN RAD	DRAWING TYPE	ARCHITECTURE	PROJECT NAME	
STRUCTURE/DESIGN	ENG.FATEMA ZEWARI	SCALE	As shown (A3)	CODE NO S-0254	2 13	PROJECT TYPE/DRAWING TITLE	
TECH-APPROVED BY	ENG.AB.MATIN MAQOOL	REVISED DATE	JULY 2014			6 CLASS ROOM /FURNITURE PLAN	







MINISTRY OF EDUCATION  
DEPARTMENT OF CONSTRUCTION

# STANDARD SCHOOL DESIGN IN AFGHANISTAN

ARCHITECT/DESIGN	AH.NAKILA AFZALI	APPROVED Doc/Mos	ENG ABDULMOHSEN RAD
STRUCTURE/DESIGN	ENG.FATEMA ZEWARI	SCALE	As shown (A3)
TECH-APPROVED BY	ENG.AB.MATIN MAQOOL	REVISED DATE	JULY 2014

DRAWING TYPE	ARCHITECTURE
CODE NO	S-0254

2	13
---	----

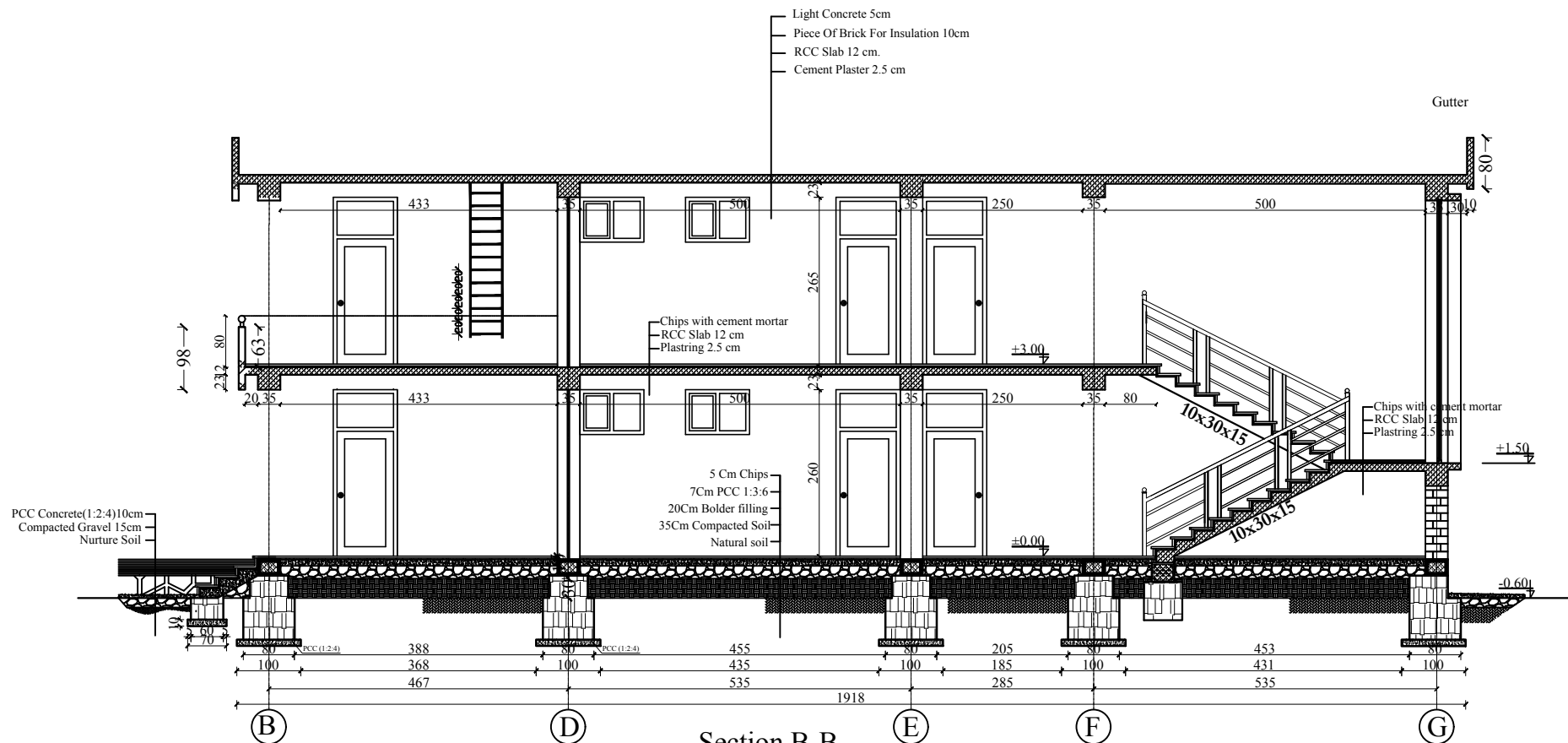
PROJECT NAME

PROJECT TYPE/DRAWING TITLE

6 CLASS ROOM / PAVEMENT PLAN







MINISTRY OF EDUCATION  
DEPARTMENT OF CONSTRUCTION

# STANDARD SCHOOL DESIGN IN AFGHANISTAN

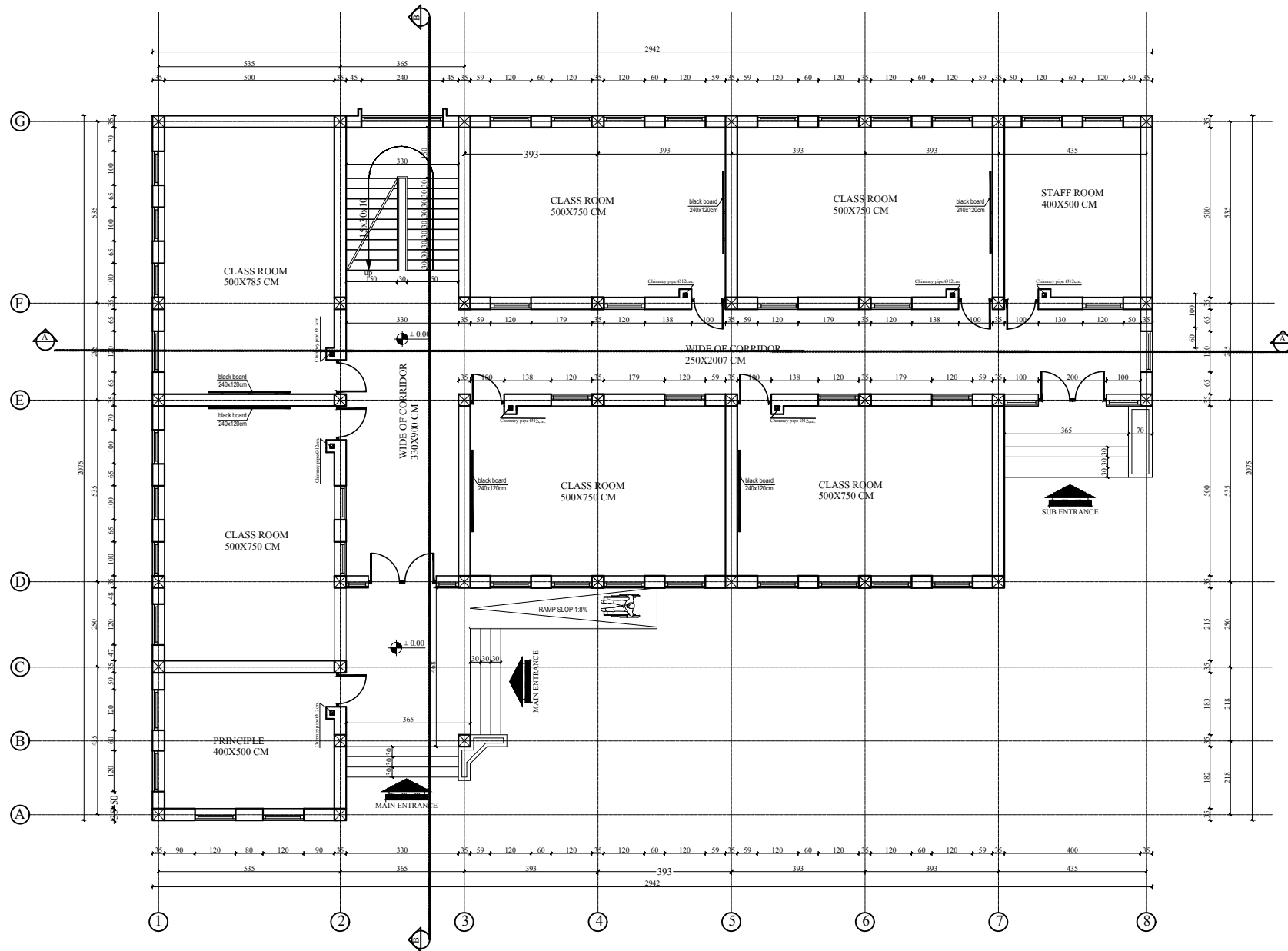
ARCHITECT/DESIGN	AH NAKILA AFZALI	APPROVED-Doc/Moc	ENG.ABDULMOHMMEN RAD
STRUCTURE/DESIGN	ENG.FATEMA ZEWARI	SCALE	As shown (A3)
TECH- APPROVED BY	ENG.AHMATIN MAQOOL	REVISED DATE	JULY 2014

DRAWING TYPE	ARCHITECTURE
CODE NO	2
S-0254	13

PROJECT NAME	
PROJECT TYPE/DRAWING TITLE	6 CLASS ROOM / PAVEMENT PLAN







GROUND FLOOR PLAN

MINISTRY OF EDUCATION  
DEPARTMENT OF CONSTRUCTION

# STANDARD SCHOOL DESIGN IN AFGHANISTAN

ARCHITECT/DESIGN	AH NAKILA AFZALI	APPROVED-Doc/Moc	ENG ABDULMOHMMEN RAD
STRUCTURE/DESIGN	ENG FATEMA ZEVARI	SCALE	As shown (A3)
TECH-APPROVED BY	ENG AH MATIN MAQOOL	REVISED DATE	JULY 2014

DRAWING TYPE	ARCHITECTURE
CODE NO	2
5-0254	13

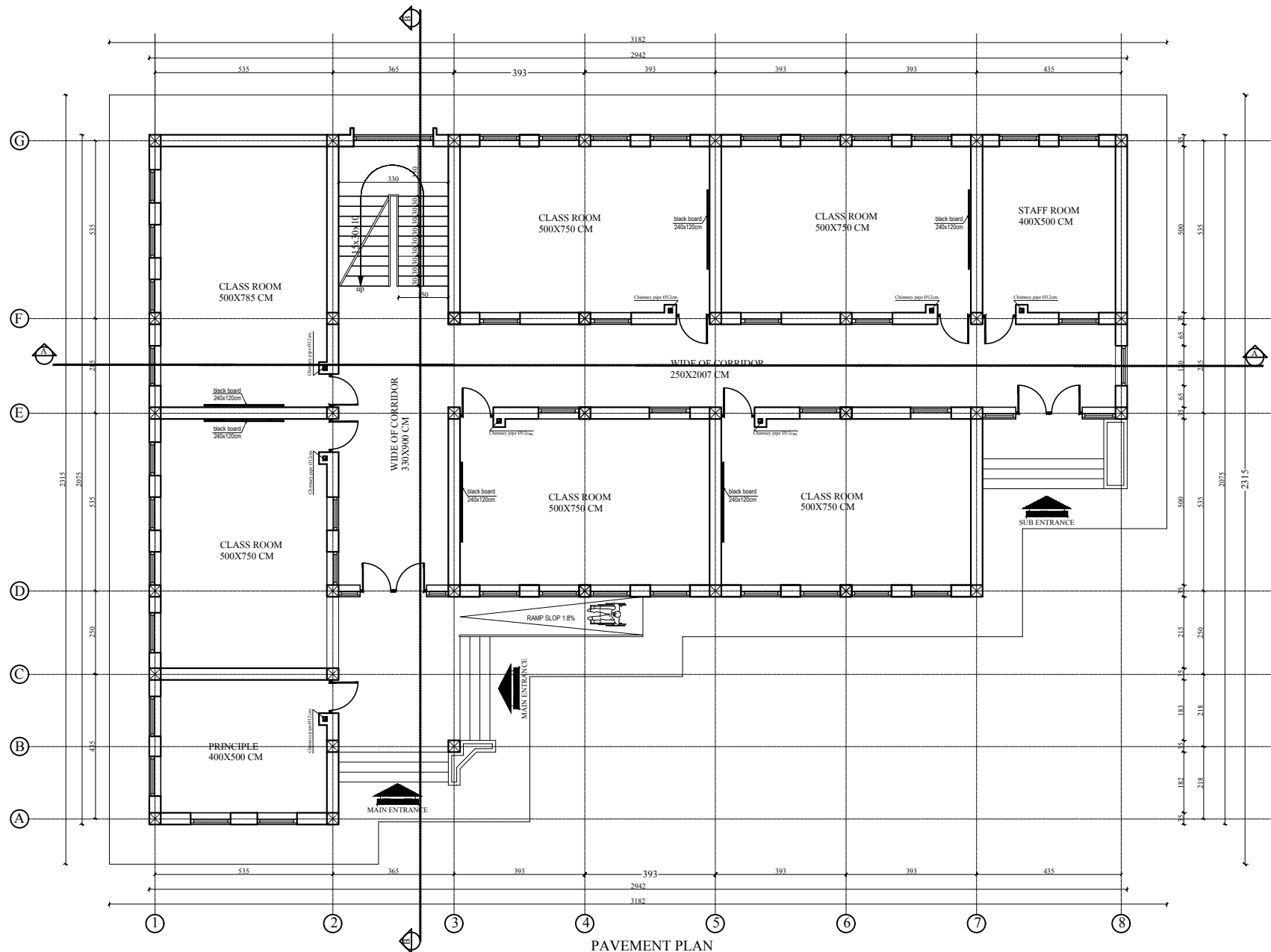
PROJECT NAME

PROJECT TYPE/DRAWING TITLE

6 CLASS ROOM / GROUND FLOOR PLAN







PAVEMENT PLAN

MINISTRY OF EDUCATION  
DEPARTMENT OF CONSTRUCTION

# STANDARD SCHOOL DESIGN IN AFGHANISTAN

ARCHITECT/DESIGN  
STRUCTURE/DESIGN  
TECH-APPROVED BY

AH.NAKILA AFZALI  
ENG.FATEMA  
ZEWARI  
ENG.AB.MATIN MAQOOL

APPROVED Doc/Mo  
SCALE  
REVISED DATE

ENG.ABDULMOHME  
RAD  
As shown (A3)  
JULY 2014

DRAWING TYPE  
ARCHITECTURE  
CODE NO  
S-0254

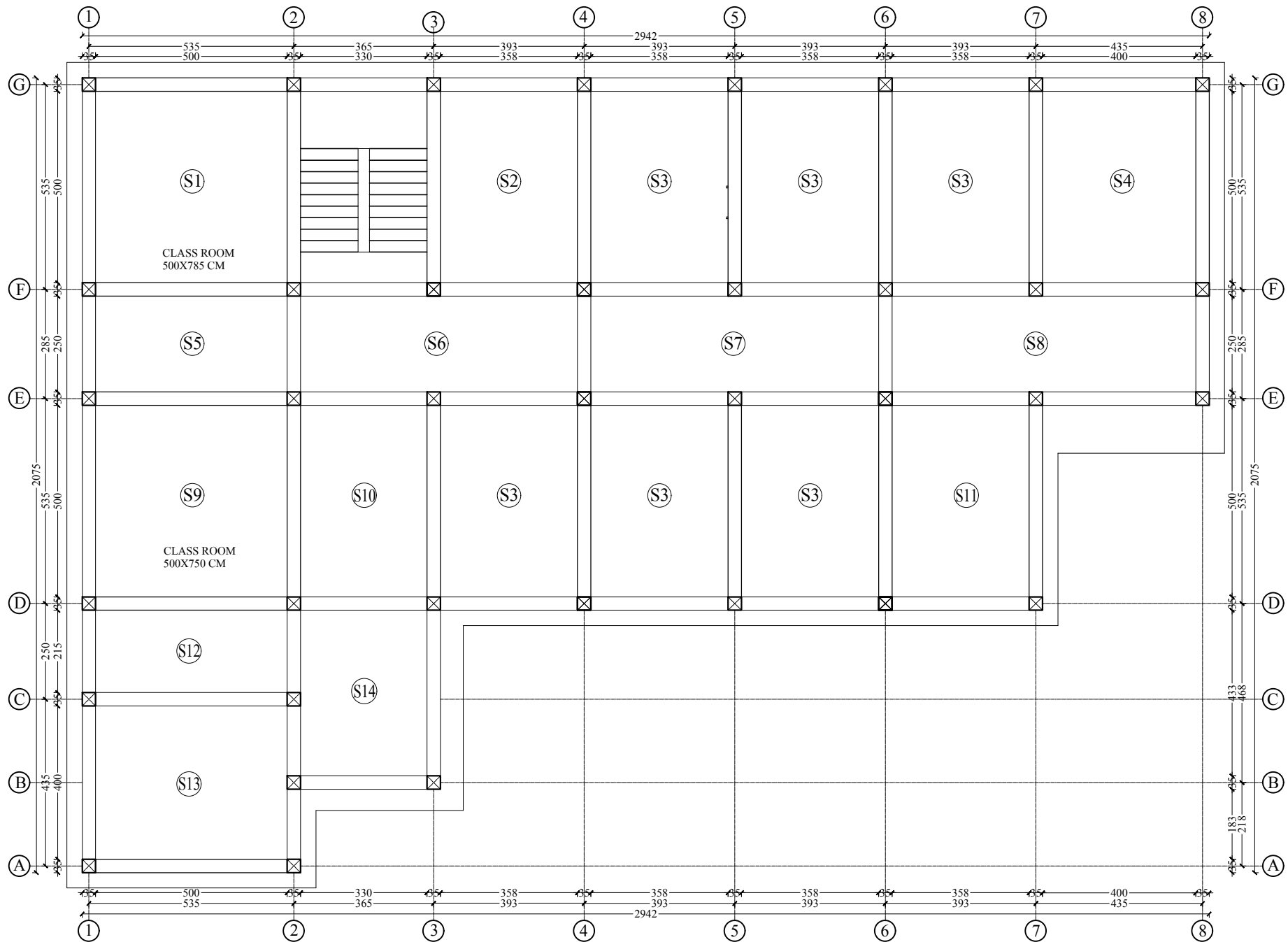
2  
13

PROJECT NAME  
PROJECT TYPE/DRAWING TITLE

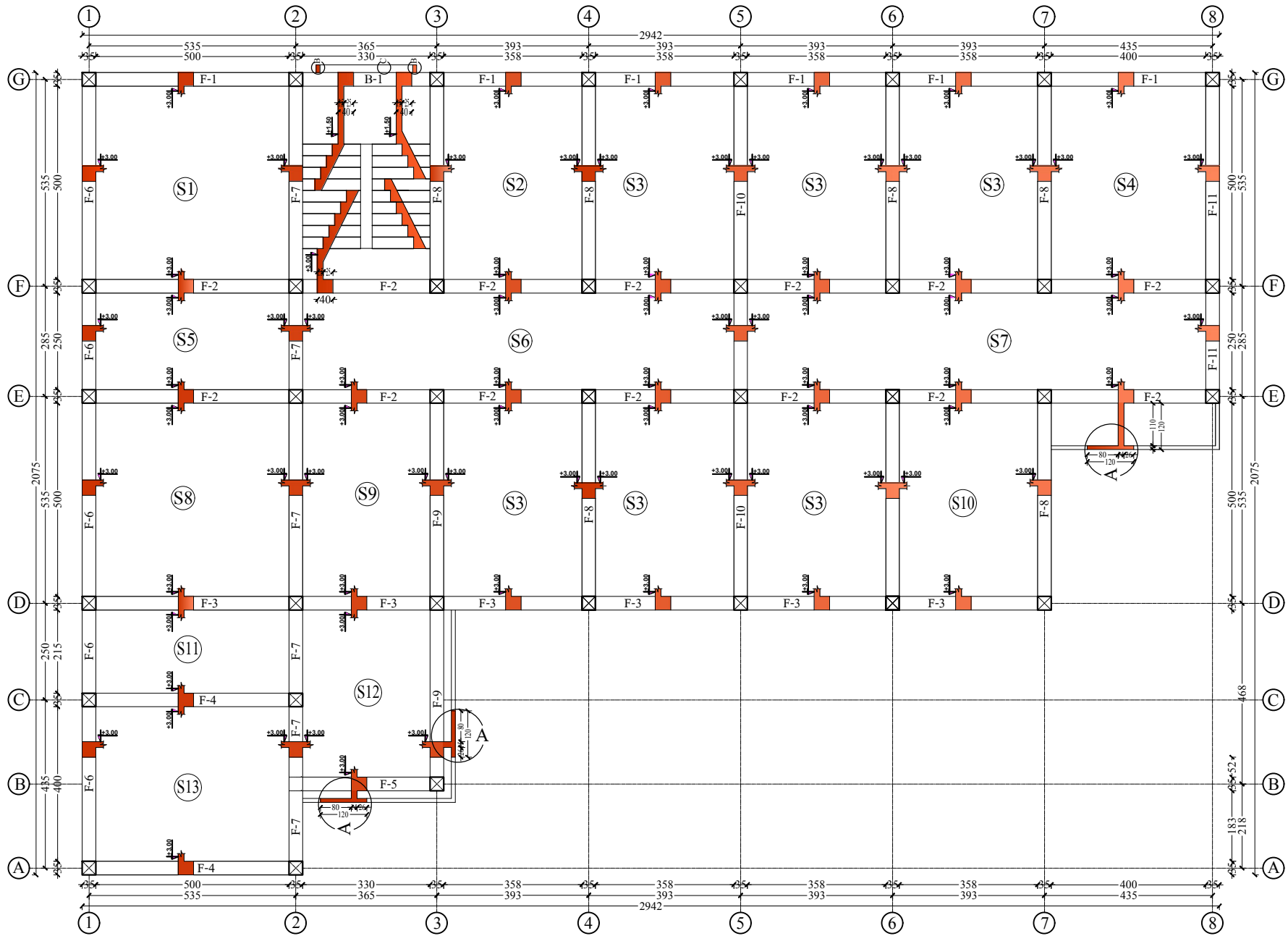
6 CLASS ROOM / PAVEMENT PLAN









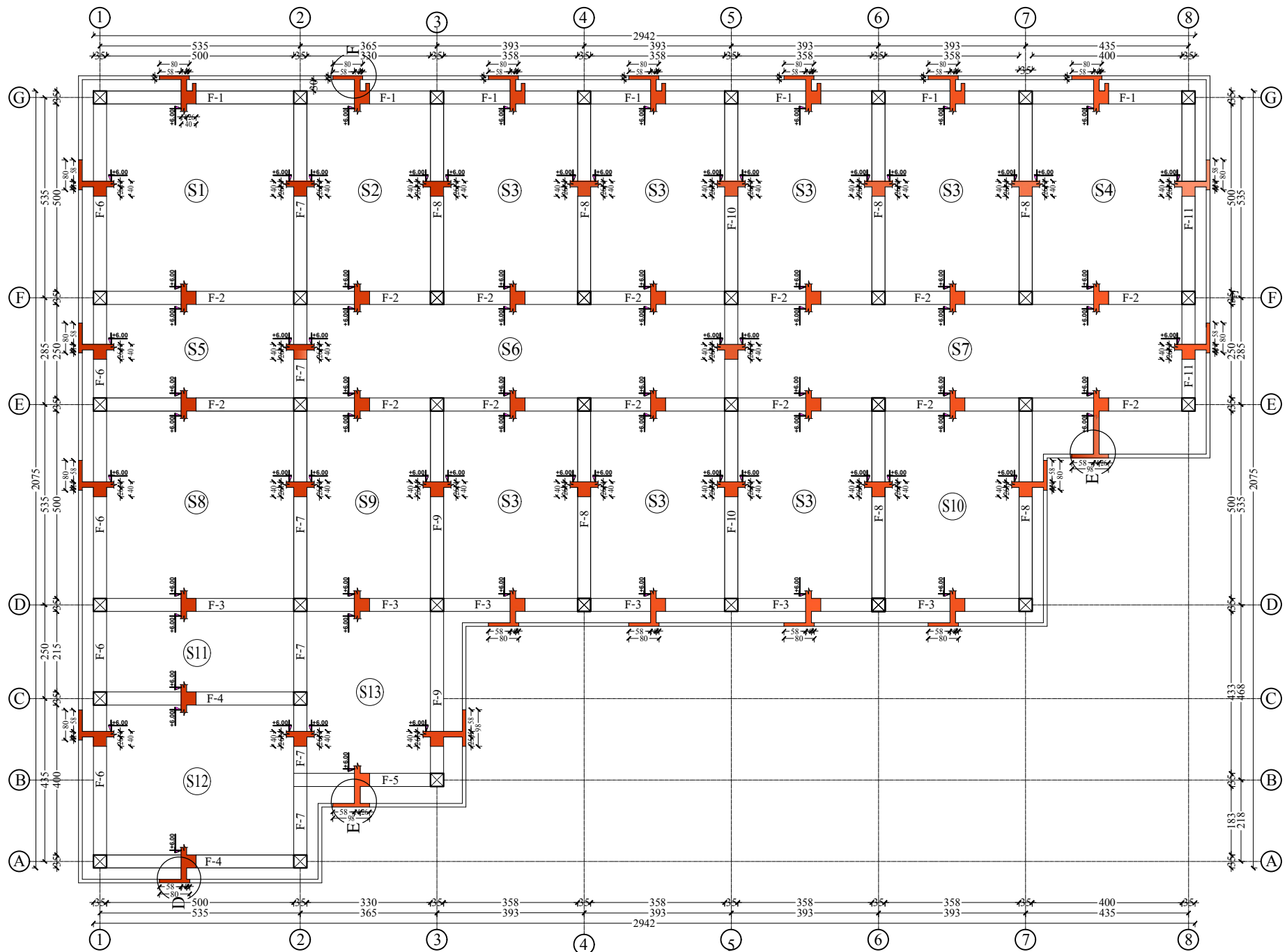


GROUND FLOOR SHUTTERING PLAN AT LEVEL 3.00







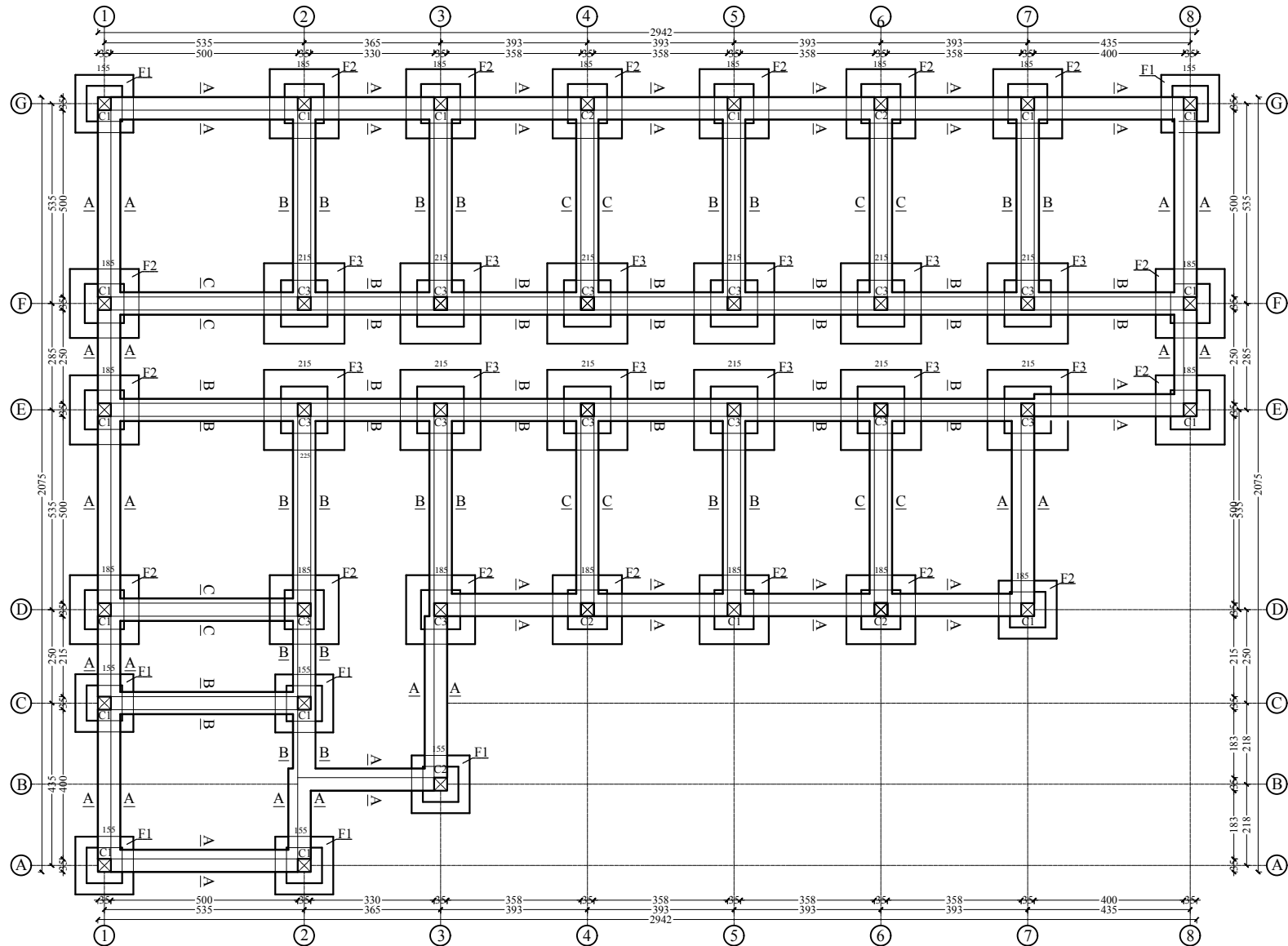


FIRST FLOOR SHUTTERING PLAN AT LEVEL 6.00









FOUNDATION PLAN

- 1-Base on soil that result the safe bearing capacity of soil has been assumed as (1.5 Kg/cm<sup>2</sup>) at foundation level.
- 2-Minimum depth of foundation below original firm soil will be (80cm).
- 3-Concrete for all reinforced elements will be of ratio(1:1.5:3) and cubical strength of (200kg/cm<sup>2</sup>) after 28 days.
- 4-Reinforcement grade 1 mild steel having minimum yield stress of (2800Kg/cm<sup>2</sup>) that shown by (Ø).
- 5-Reinforcement grade 2 deformed bars having minimum yield stress(4200Kg/cm<sup>2</sup>) that shown by (N).
- 6-P.C.C(1:2:4).



