

5-Angle located which is connect to the Wheel
 4NO deferent length Square shape profile
 having (40*40)mm size 3mm thickness 5kg weight per m

7-well for frame turning

8-8NO1.5" Six metter Angle Iron which is placed above the
 8NO Square shape profile



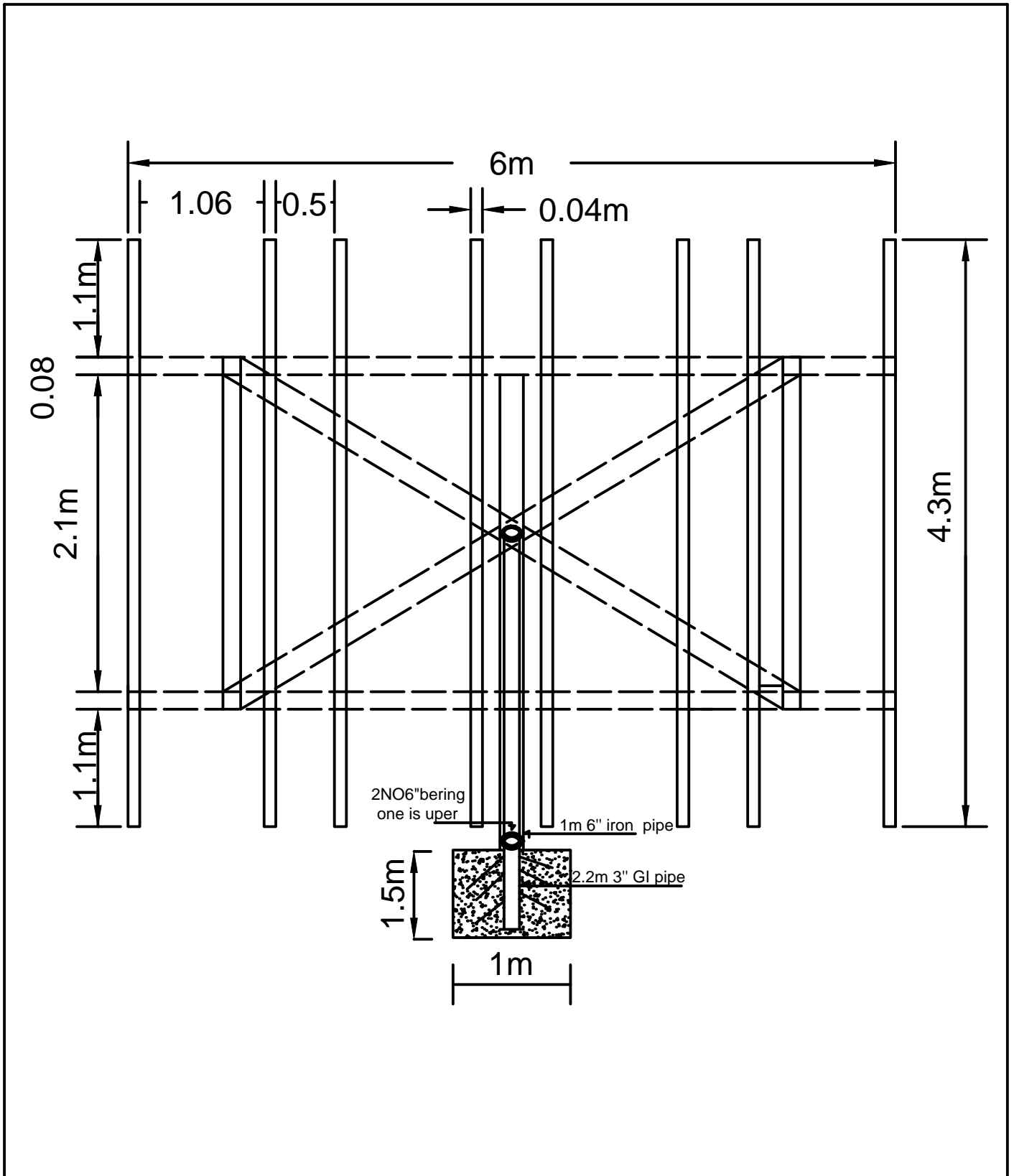
Solar Panel Frame Drawing

Drawing by

Eng Ehsanullah (Mohmand)

Approve by

Eng Noorullah (Hassan)



Solar Panel Frame Drawing

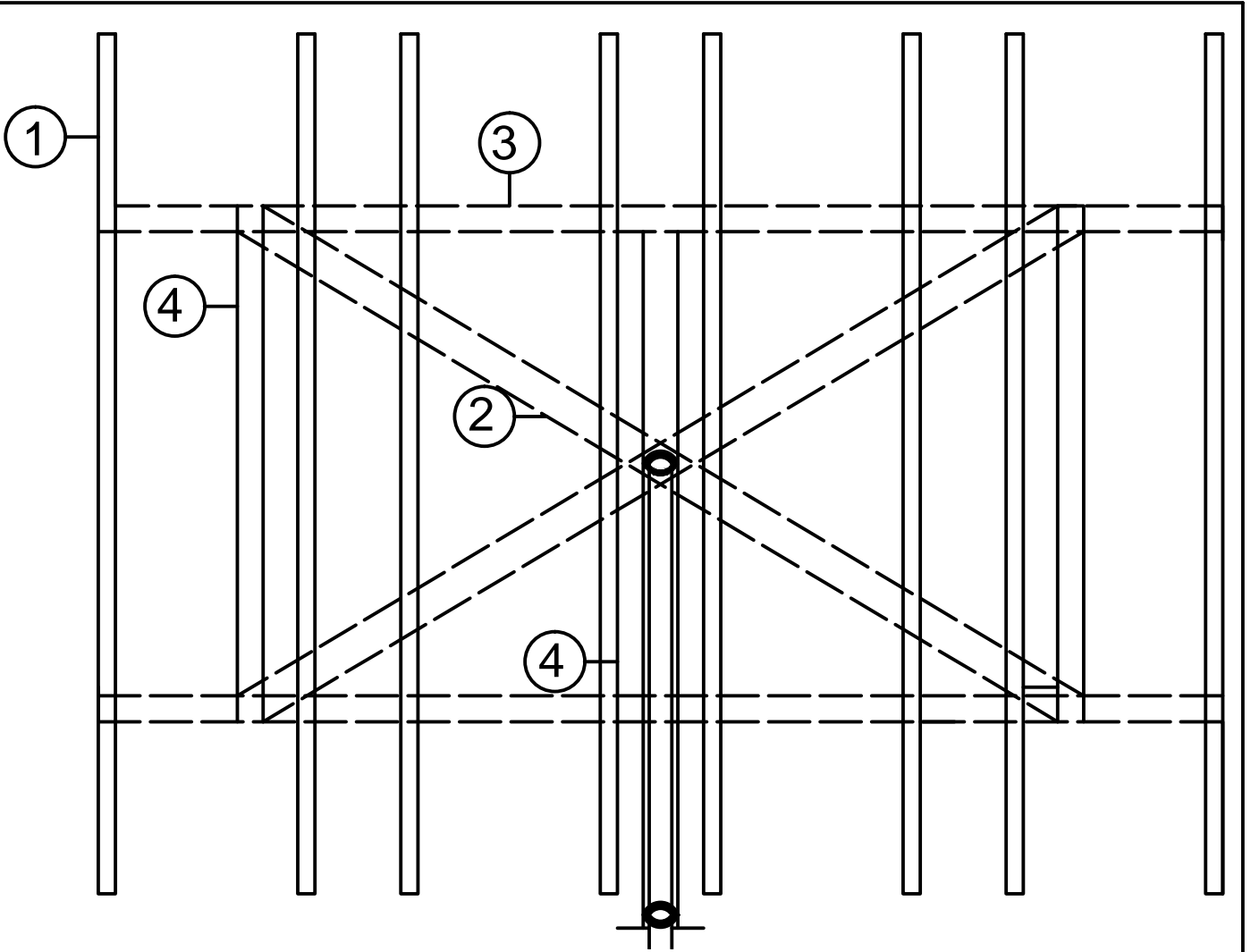
Drawing by

Eng Ehsanullah (Mohmand)

Approve by

Eng Noorullah (Hassan)





1-Vertical 8NO 4.3m Square shape profile having (40*40)mm size 3mm thickness 5kg weight per m

2-Angle located which is connect to the Main support 4NO different length Square shape profile having (40*40)mm size 3mm thickness 5kg weight per m

3-Horizontal 2NO 6m Square shape profile having (80*80)mm size 2.5mm thickness 7kg weight per m

4-Vertical 4NO 2.1m Square shape profile having (80*80)mm size 2.5mm thickness 7kg weight per m

This frame can be use for 16th solar (1x1.85)m Panel



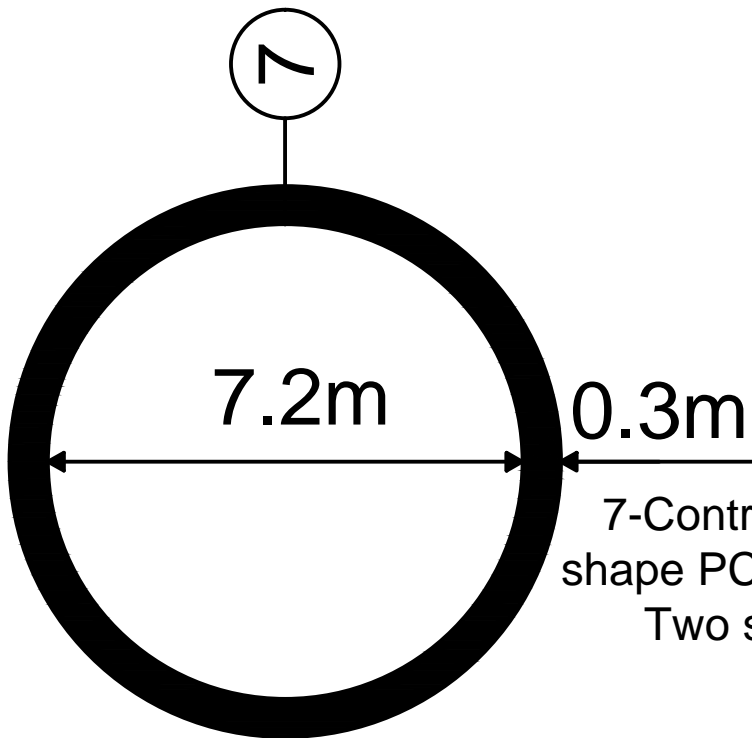
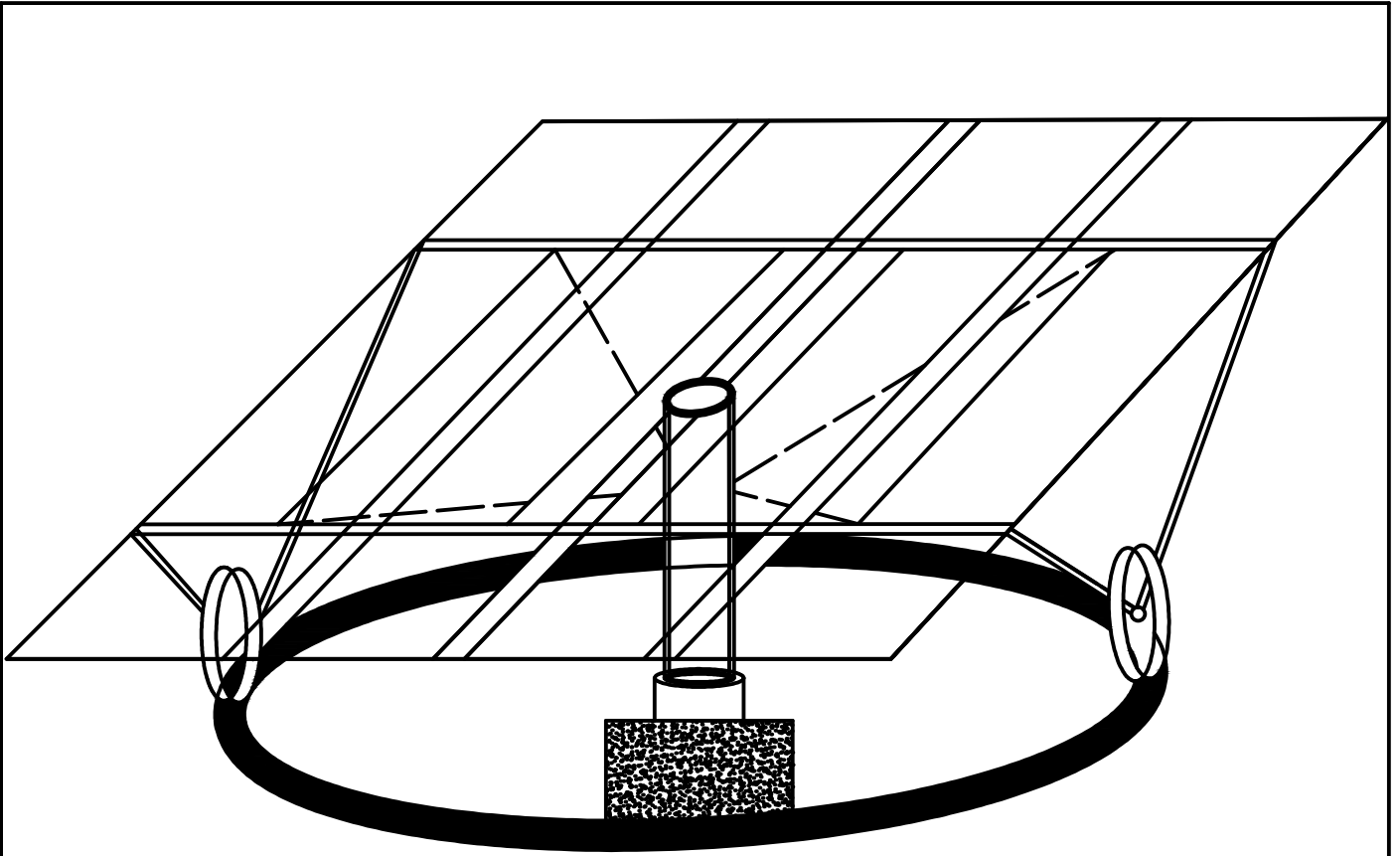
Solar Panel Frame Drawing

Drawing by

Eng Ehsanullah (Mohmand)

Approve by

Eng Noorullah (Hassan)



7-Contractor should make circular shape PCC for wheel which are placed Two side of the frame stability



Solar Panel Frame Drawing

Drawing by

Eng Ehsanullah (Mohmand)

Approve by

Eng Noorullah (Hassan)