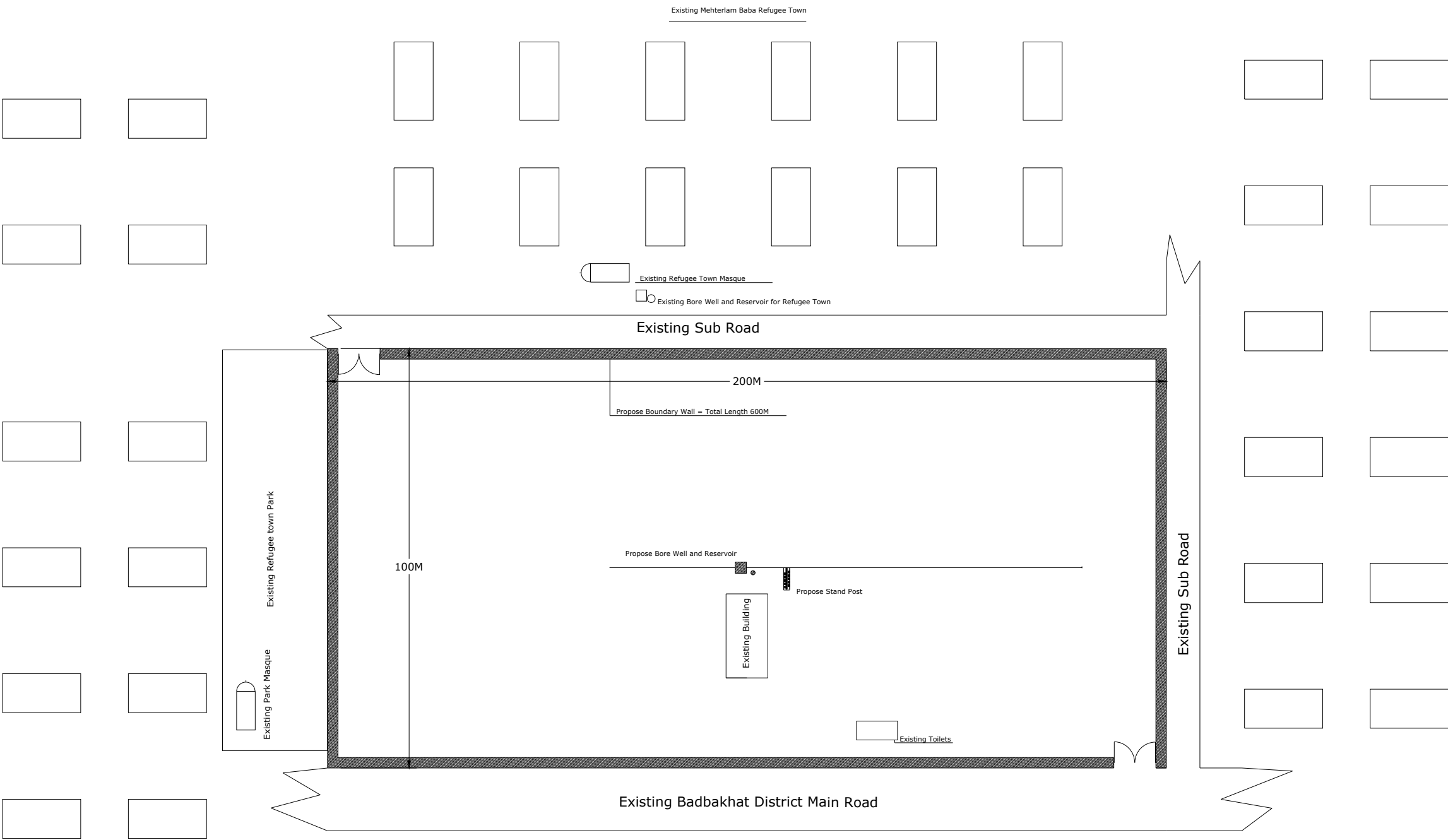


Mehterlam Baba Model School Site Plan



Organization for Human and Welfare (OHW)

Engineering Department

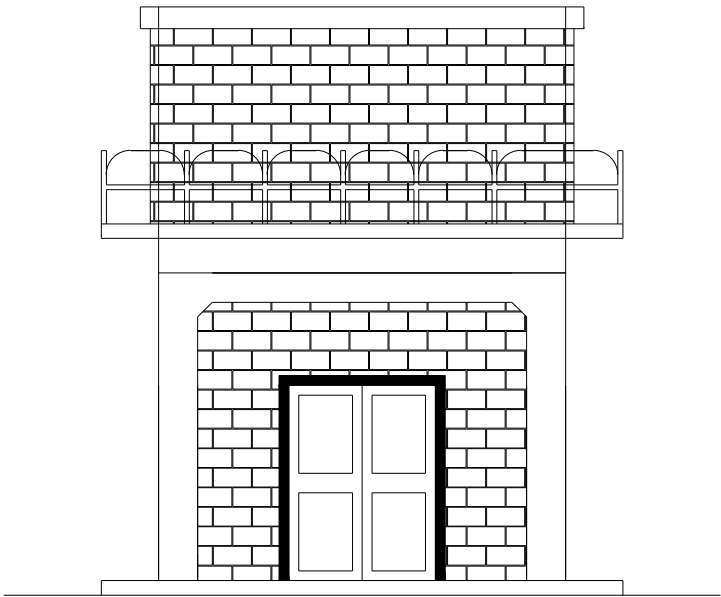
Surveyed By	Eng.Ajmal	Project No	
Designed By	Eng.Asad	Province	Laghman
Drawn By	Eng.Ajmal	District	Mehterlam
Approved By	UNHCR	Village	Mehterlam Baba Camp



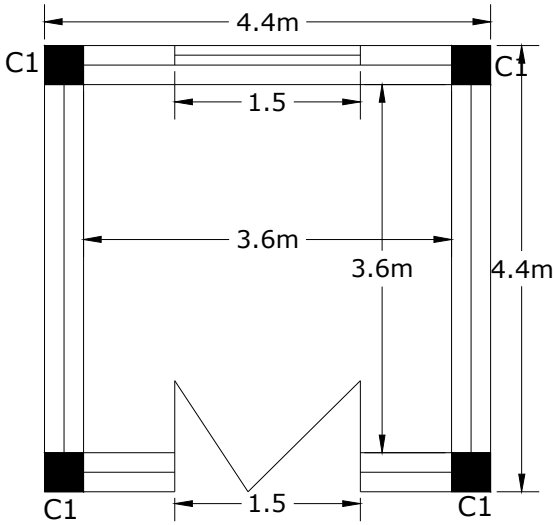
Mehterlam Baba Model School

Site Plan


Front Elevation



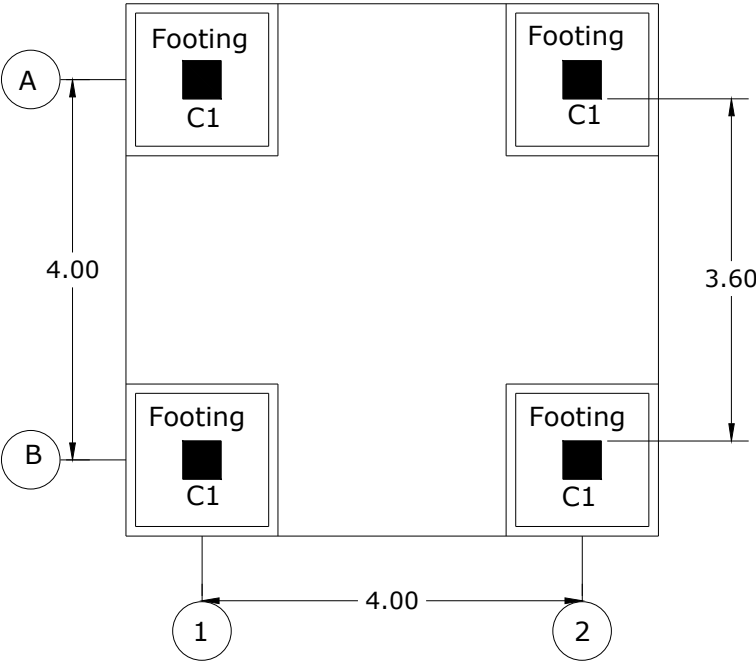
Room plan



Organization for Human and Welfare (OHW)

Engineering Department				Mehterlam Baba Model School	
Surveyed By	Eng.Ajmal	Project No			<div>Reservoir Architect</div> <div>02</div>
Designed By	Eng.Asad	Province	Lagman		
Drawn By	Eng.Ajmal	District	Mehterlam		
Approved By	UNHCR	Village	Mehterlam Camp		

Foundation Plan



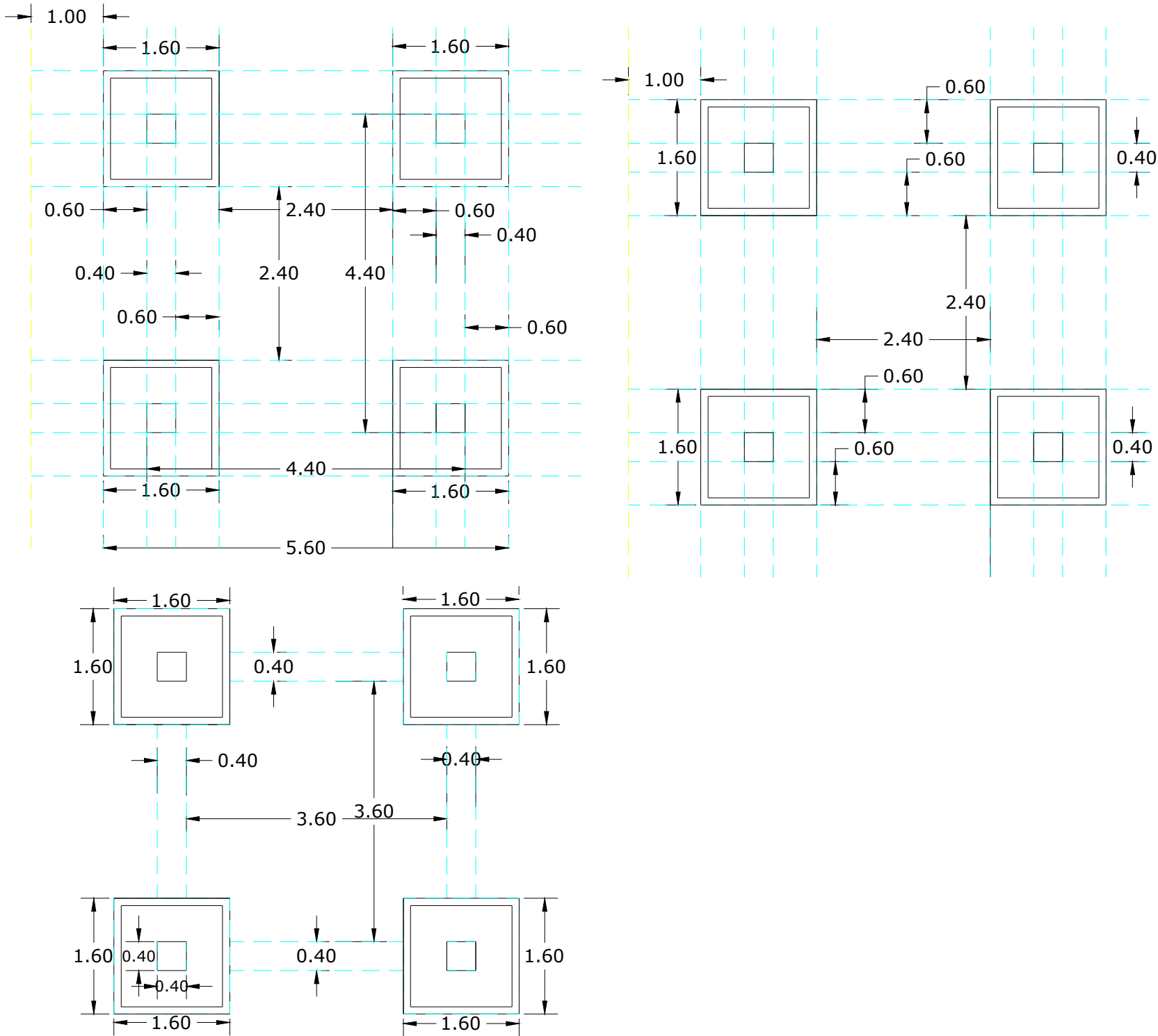
Organization for Human and Welfare (OHW)

Engineering Department			
Surveyed By	Eng.Ajmal	Project No	
Designed By	Eng.Asad	Province	Laghman
Drawn By	Eng.Ajmal	District	Mehterlam
Approved By	UNHCR	Village	Mehterlam Camp



Mehterlam Baba Model School	
Reservoir Foundation Plan	04

Plan of Lining for construction of Reservior.

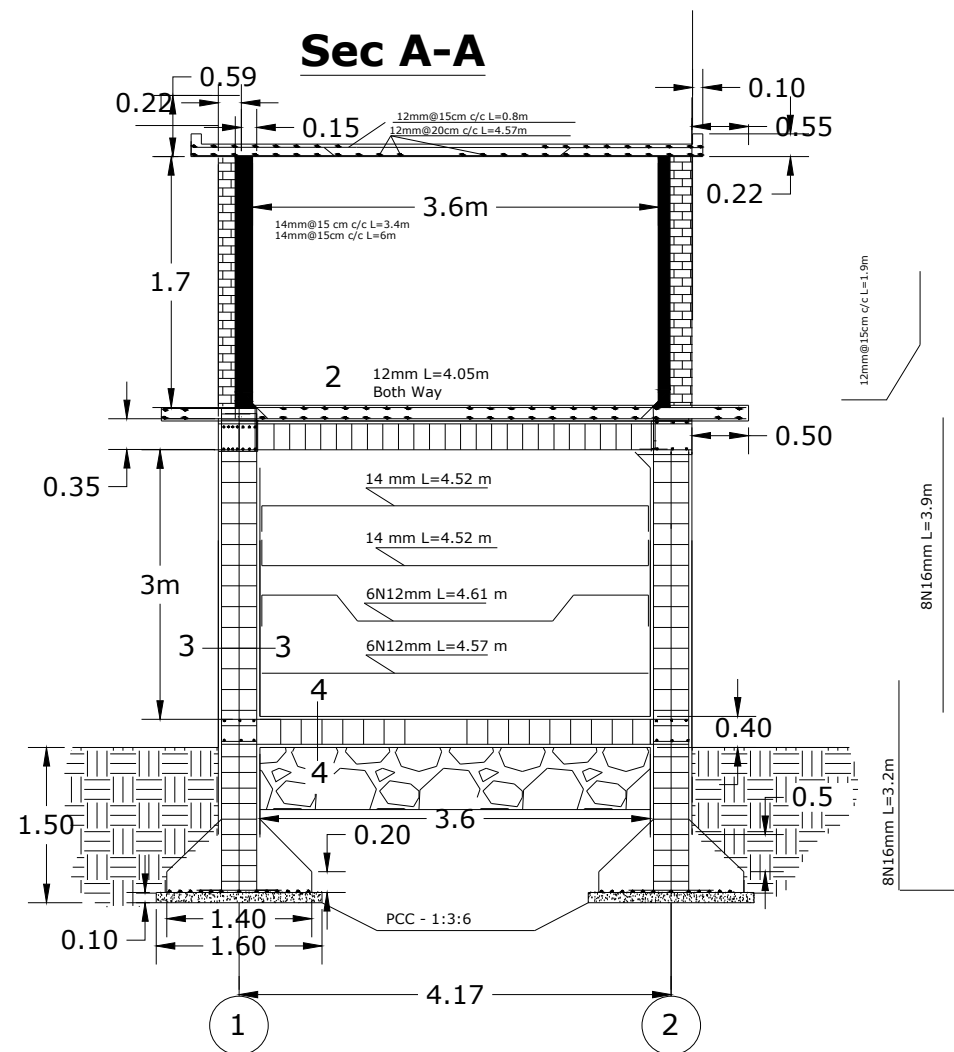


Organization for Human and Welfare (OHW)

Engineering Department			
Surveyed By	Eng.Ajmal	Project No	
Designed By	Eng.Asad	Province	Laghman
Drawn By	Eng.Ajmal	District	Mehterlam
Approved By	UNHCR	Village	Mehterlam Camp



Mehterlam Baba Model School	
Reservoir Foundation Lining Plan	03



Organization for Human and Welfare (OHW)

Engineering Department

Surveyed By	Eng.Ajmal	Project No	
Designed By	Eng.Asad	Province	Laghman
Drawn By	Eng.Ajmal	District	Mehterlam
Approved By	UNHCR	Village	Mehterlam Camp

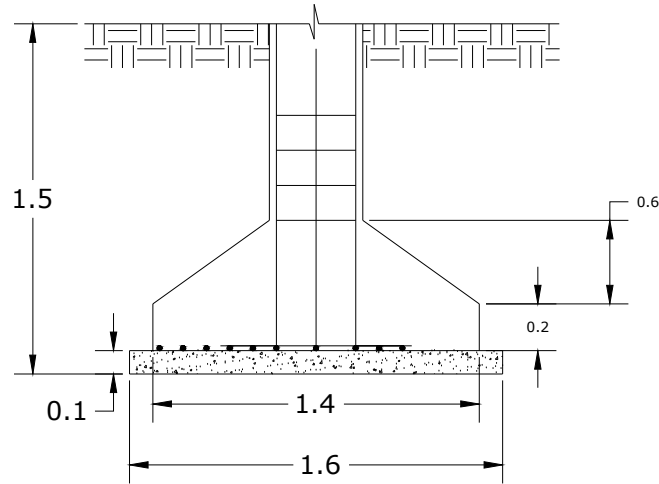


Mehterlam Baba Model School

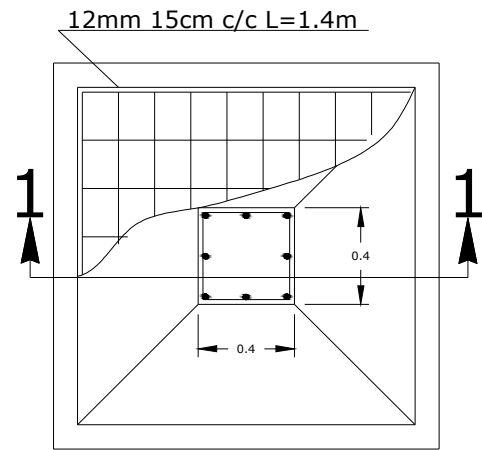
Reservoir RCC Sections

05

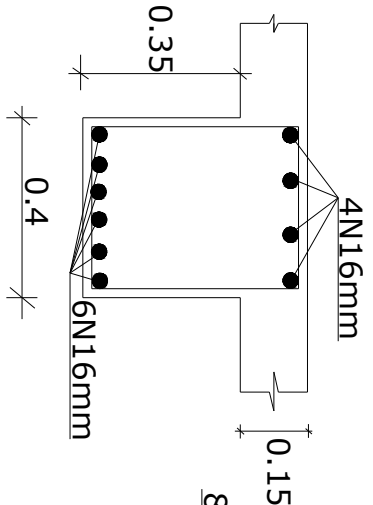
Sec 1-1



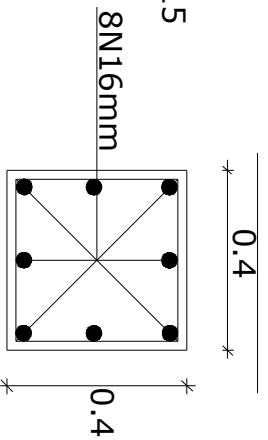
Footing



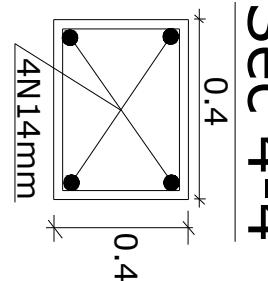
Sec 2-2



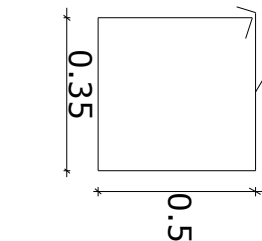
Sec 3-3



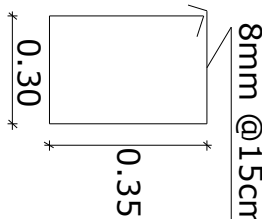
Sec 4-4



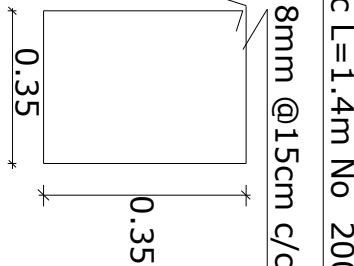
8mm @15cm c/c L=1.9m No 100



8mm @15cm c/c L=1.4m No 200



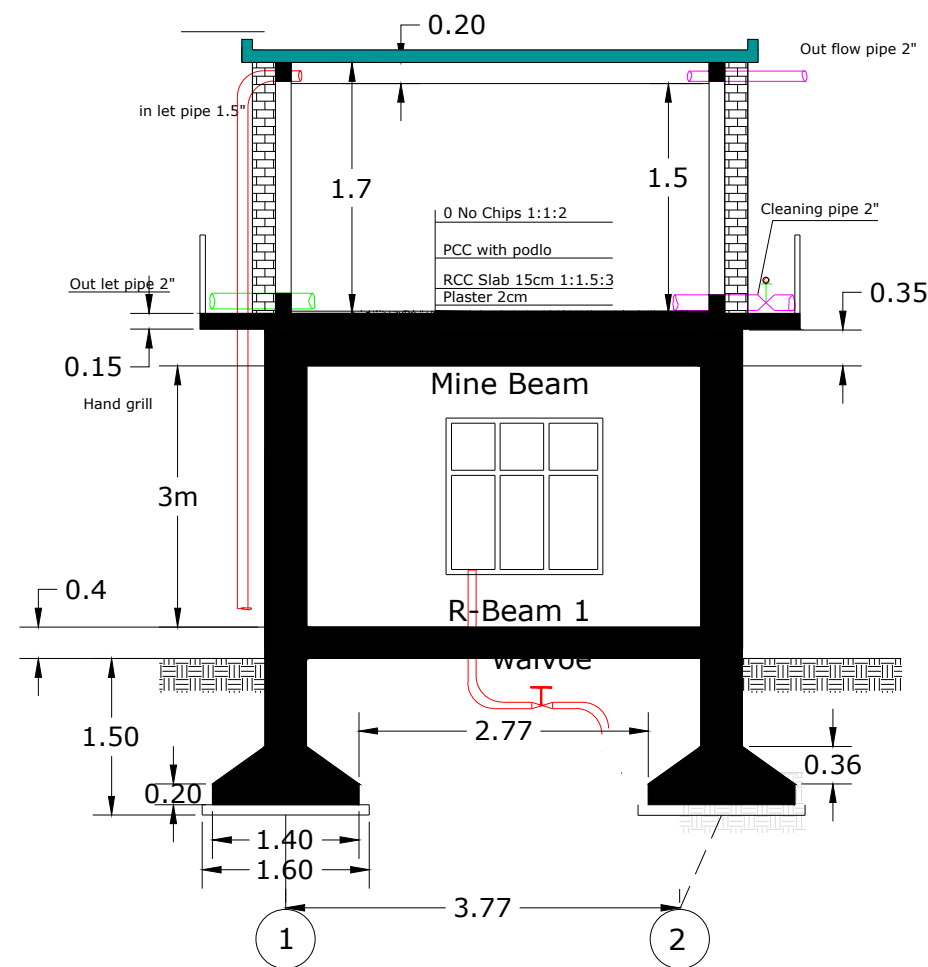
8mm @15cm c/c L=1.6m No 368



Organization for Human and Welfare (OHW)

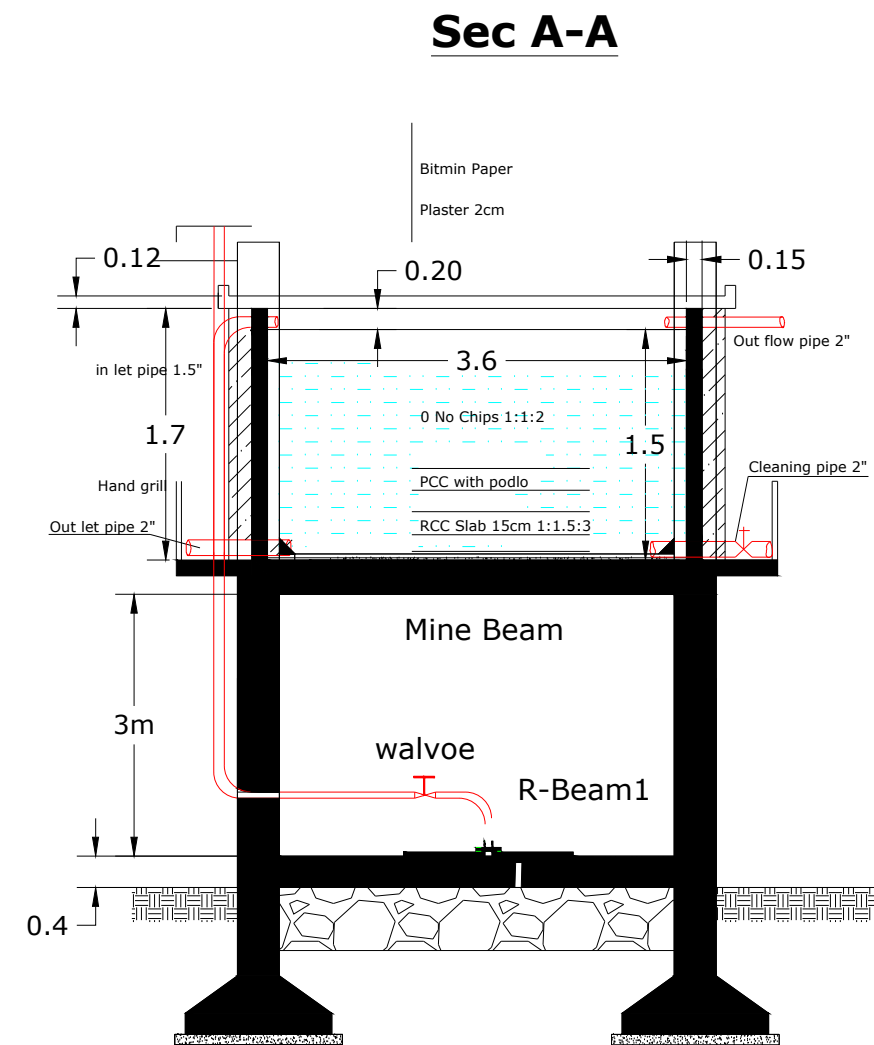
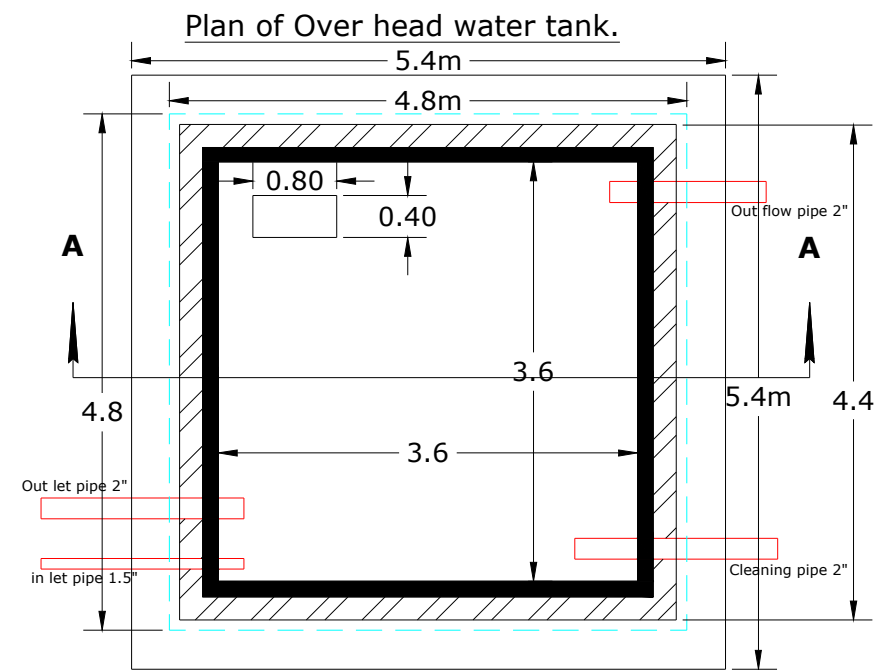
Engineering Department				Mehterlam Baba Model School	
Surveyed By	Eng.Ajmal	Project No			Reservoir Foundation Plan
Designed By	Eng.Asad	Province	Laghman		
Drawn By	Eng.Ajmal	District	Mehterlam		
Approved By	UNHCR	Village	Mehterlam Camp		

Sec A-A



Organization for Human and Welfare (OHW)

Engineering Department					Mehterlam Baba Model School	
Surveyed By	Eng.Ajmal	Project No			Reservoir RCC Sections	<div>07</div>
Designed By	Eng.Asad	Province	Laghman			
Drawn By	Eng.Ajmal	District	Mehterlam			
Approved By	UNHCR	Village	Mehterlam Camp			



Organization for Human and Welfare (OHW)

Engineering Department

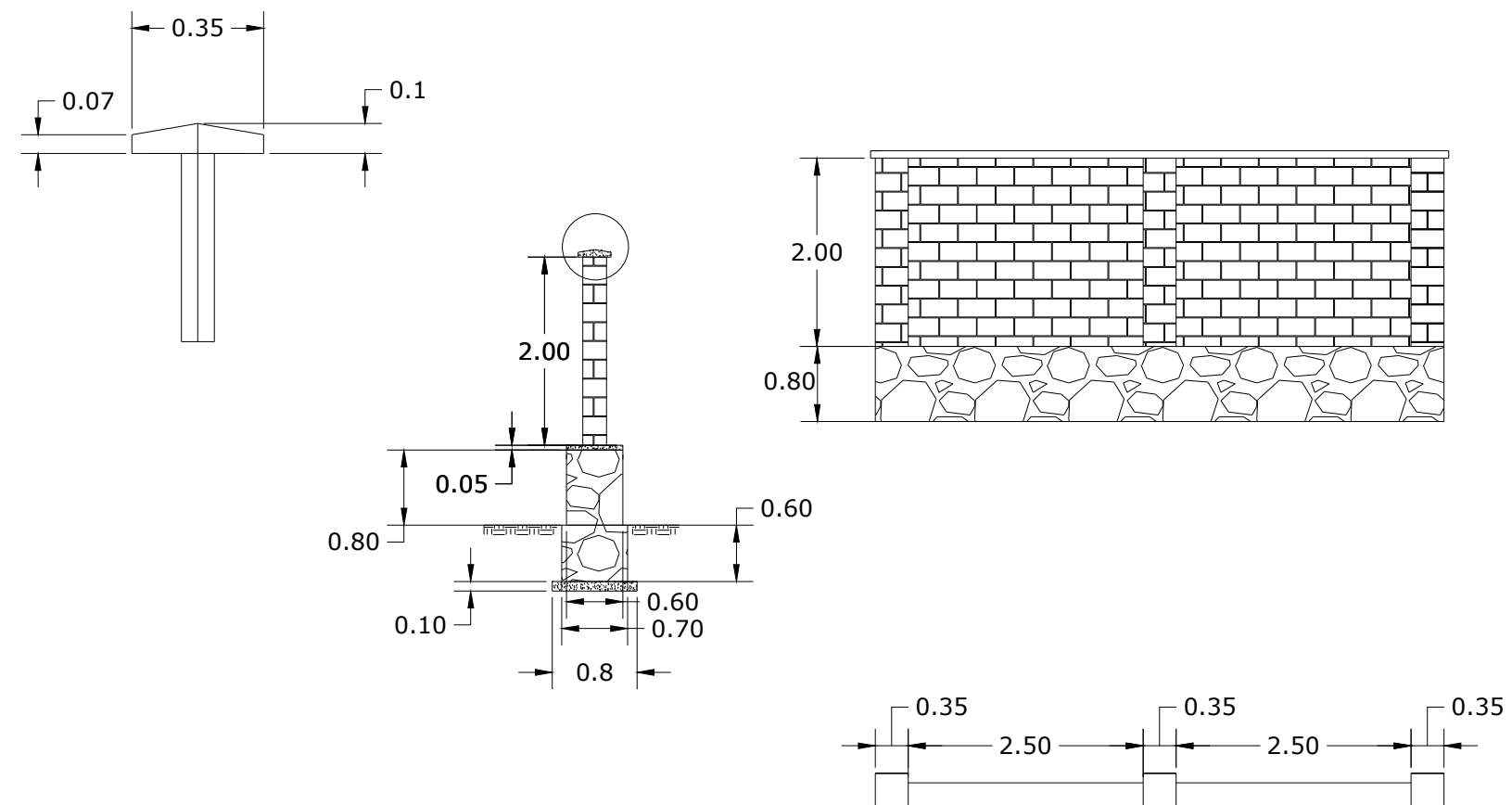
Surveyed By	Eng.Ajmal	Project No	
Designed By	Eng.Asad	Province	Laghman
Drawn By	Eng.Ajmal	District	Mehterlam
Approved By	UNHCR	Village	Mehterlam Camp



Mehterlam Baba Model School

Reservoir RCC Sections

08

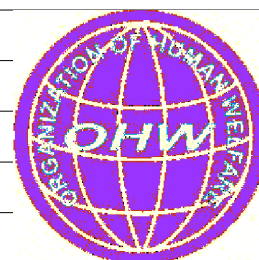


Organization for Human and Welfare (OHW)

Engineering Department

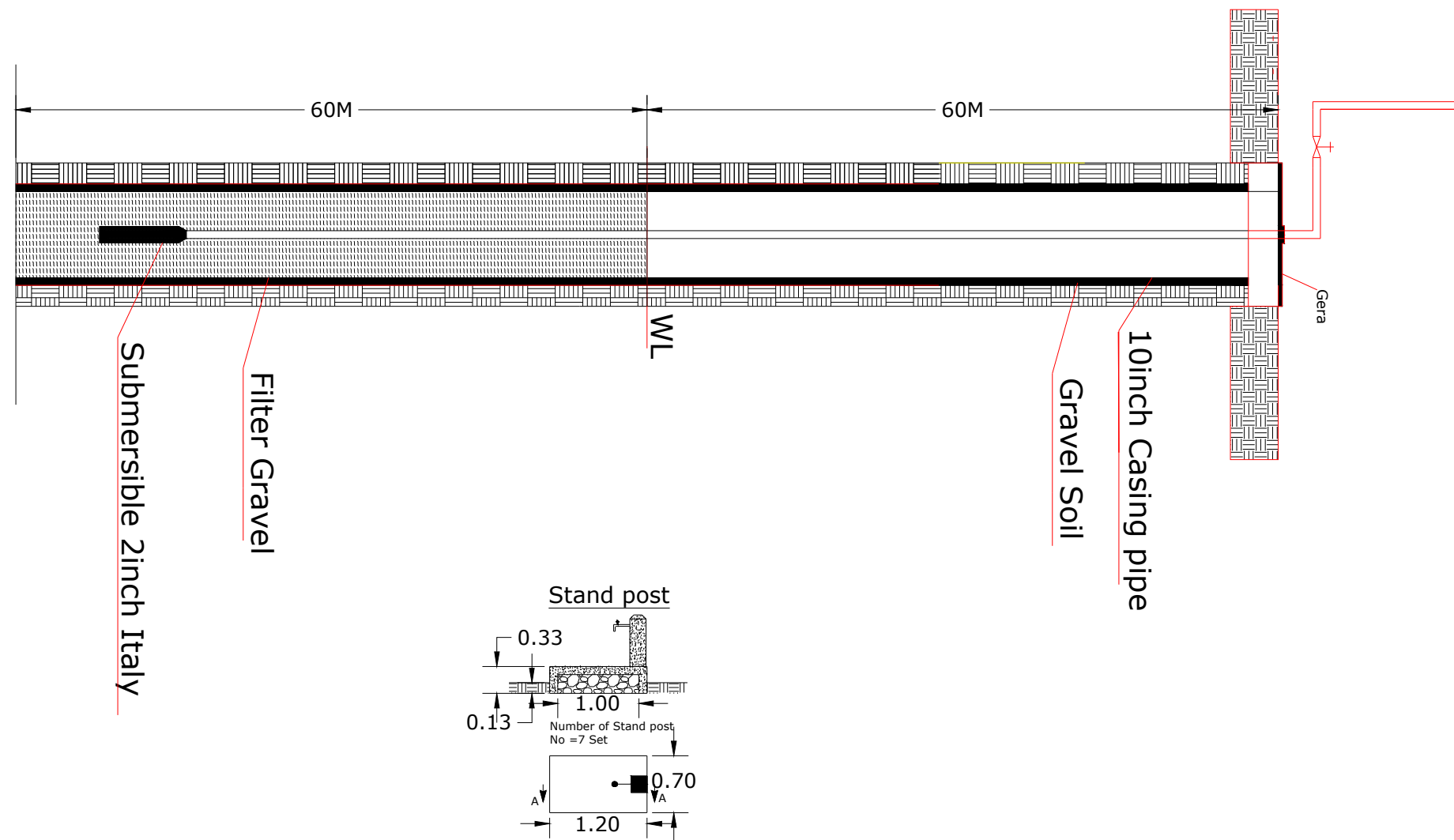
Mehterlam Baba Model School

Surveyed By	Eng.Ajmal	Project No	
Designed By	Eng.Asad	Province	Laghman
Drawn By	Eng.Ajmal	District	Mehterlam
Approved By	UNHCR	Village	Mehterlam Camp



Boundary Wall

09



Organization for Human and Welfare (OHW)

Engineering Department

Surveyed By	Eng.Ajmal	Project No	
Designed By	Eng.Asad	Province	Laghman
Drawn By	Eng.Ajmal	District	Mehterlam
Approved By	UNHCR	Village	Mehterlam Camp



Mehterlam Baba Model School

Bore Well Plan

10