

# General Site plan of Bangladish, and Gandoor village of Kuz kunar Gorik

L = 200+200m Main distribution pipe HDPE 3 inch

Legend


House	[House icon]
HDPE Pipe	[HDPE Pipe icon]
Stain tap	[Stain tap icon]
Street	[Street icon]
well	[Well icon]
Hill	[Hill icon]


Map details:

- Solar system: Well depth=110m, EL:580.13m, Elevated water tank, EL:590m
- Proposed Boundary wall: 20.00m x 20.00m
- Streets and House Counts:
  - Maia shakar street: 4 (No of Families:10, No.Stain post:2)
  - Ali Asghar street: 3 (No of Families:30, No.Stain post:4)
  - Agna Pachra street: 2 (No of Families:50, No.Stain post:4)
  - Maia zabi street: 1 (No of Families:60, No.Stain post:5)
  - Abdullah street: 11 (No of Families:40, No.Stain post:4)
  - Admad street: 10 (No of Families:15, No.Stain post:2)
  - Abdullah street: 11 (No of Families:40, No.Stain post:4)
  - Admad street: 10 (No of Families:15, No.Stain post:2)
  - Ali Asghar street: 3 (No of Families:30, No.Stain post:4)
  - Agna Pachra street: 2 (No of Families:50, No.Stain post:4)
  - Maia zabi street: 1 (No of Families:60, No.Stain post:5)
  - Maia shakar street: 4 (No of Families:10, No.Stain post:2)
- Pipe Networks:
  - L=300m Main distribution pipe HDPE 2.5 inch
  - L=220m HDPE pipe 1 inch
  - L=200m HDPE pipe 1 inch
  - L=180m HDPE pipe 1 inch
  - L=120m 1.5 inch
  - L=400m sub Distribution pipe 2 inch
  - L=400m main Distribution pipe 2.5 inch
  - L=180m 2 inch HDPE pipe
  - L=400m 1.5 inch Distribution HDPE pipe
  - L=70m pipe 1 inch
  - L=50m pipe 1 inch
  - L=80m pipe 1 inch
  - L=100m pipe 1 inch
  - L=30m pipe 1 inch
  - L=50m pipe 1 inch
- Other features: Eidga mosque, Gorik school, Gorik clinic, Gorik Bazaar main Road

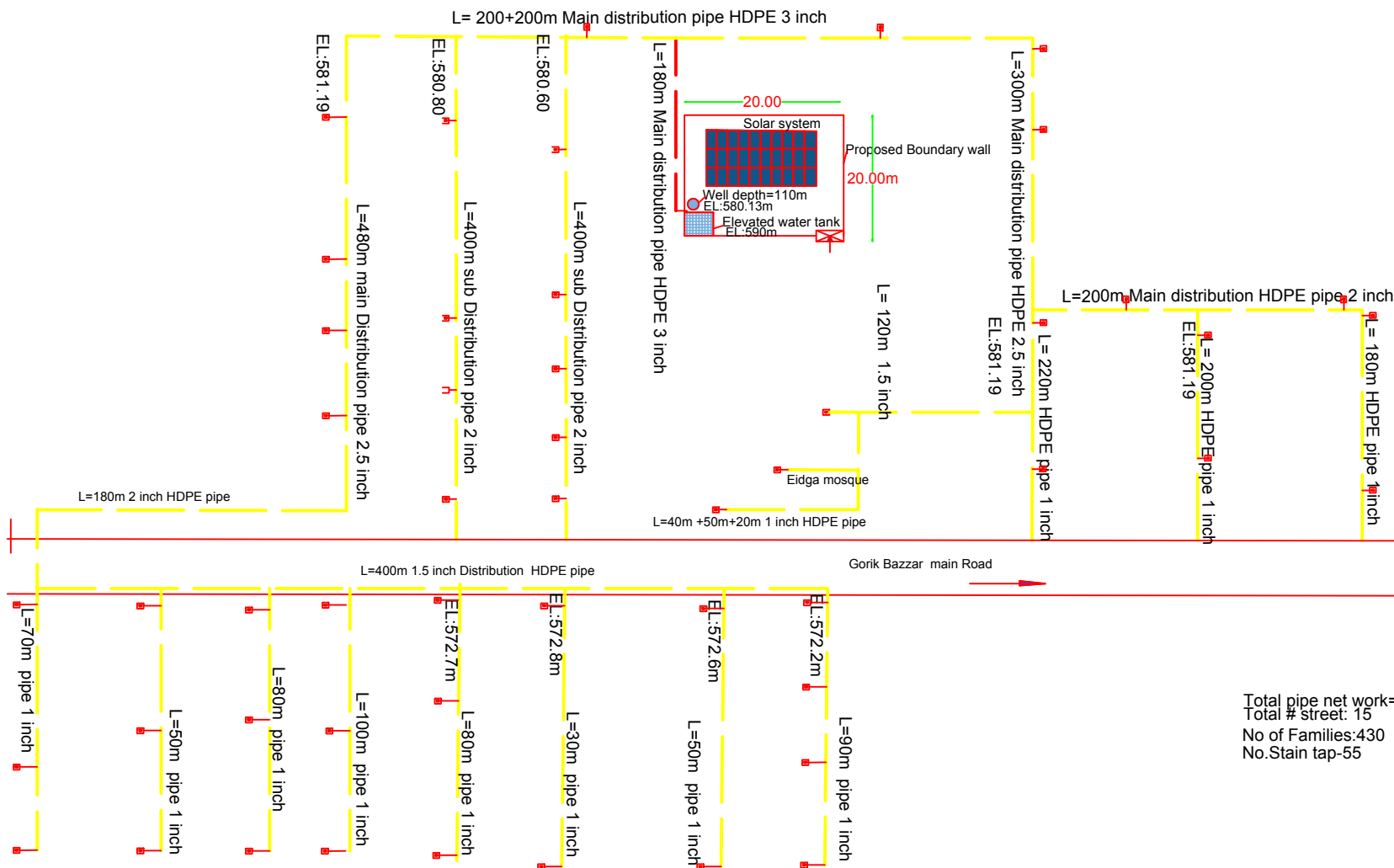
Total pipe net work=4340m  
Total # street: 15  
No of Families:430  
No.Stain tap-55

Basic Education and Employable Skill Training				BEST	
Engineering Department				Project Name	Community Based Gorik Solar power Pipe Scheme
Surveyed by	Eng Abdul Manan	Project No		Project Subject	General Site plan
Designed by	Design Team	Province	Nangarhar		1
Drawn by	EngBaryalai	District	Kuz kunar		
Approved by	UNHCR	Village	Gorik		



Basic Education and Employable Skill Training					BEST			
Engineering Department						Project Name	Community Based Gorik Solar power Pipe Scheme	Sheet No
Surveyed by	Eng Abdul Manan	Project No						
Designed by	Design Team	Province	Nangarhar			Project Subject	General Site plan	1
Drawn by	EngBaryalai	District	Kuz kunar					
Approved by	UNHCR	Village	Gorik					

# Pipe Net work Bangaladish, and Gandoor pipe scheme of Kuz kunar Gorik



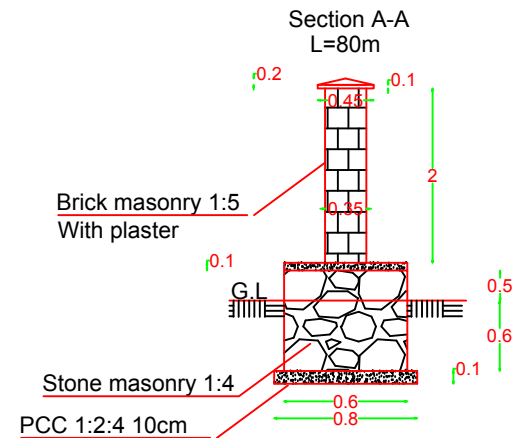
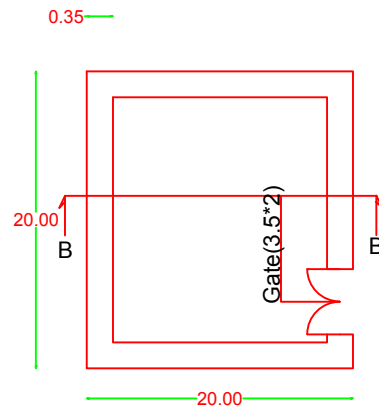
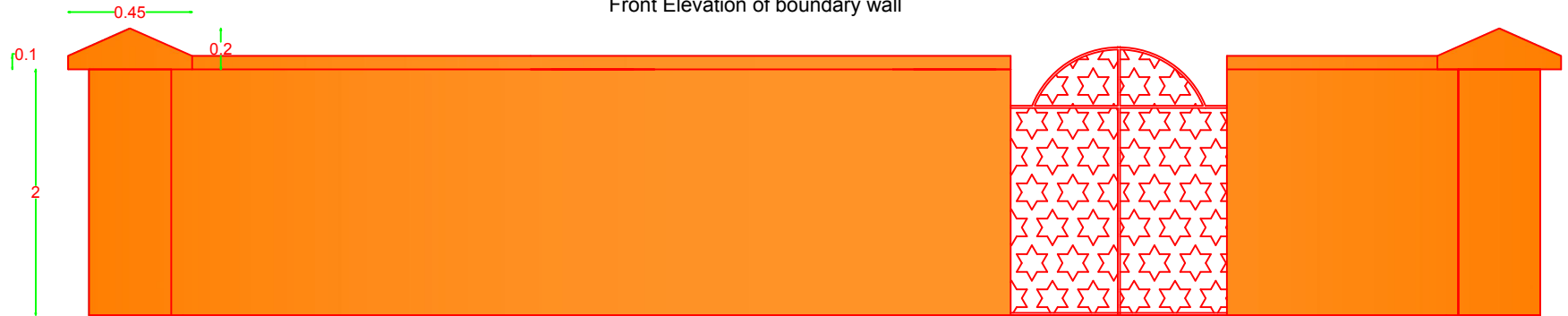
Total pipe net work=4340m  
Total # street: 15  
No of Families:430  
No.Stain tap-55

Basic Education and Employable Skill Training				BEST		
Engineering Department				Project Name	Community Based Gorik Solar power Pipe Scheme	Sheet No
Surveyed by	Eng Manan	Project No			Project Subject	2
Designed by	Design Team	Province	Nangarhar			
Drawn by	Eng Barayalai	District	Kuz kunar			
Approved by	UNHCR	Village	Gorik		Pipe network	



# Plan of boundary wall

Front Elevation of boundary wall



Basic Education and Employable Skill Training

**BEST**

Engineering Department

Project Name

Community BasedGorik  
Solar Pipe Scheme

Sheet No

Surveyed by

Eng Manan

Project No

Designed by

Design Team

Province

Nangarhar

Drawn by

Eng Baryalai

District

Kuz kunar

Approved by

UNHCR

Village

Gorik

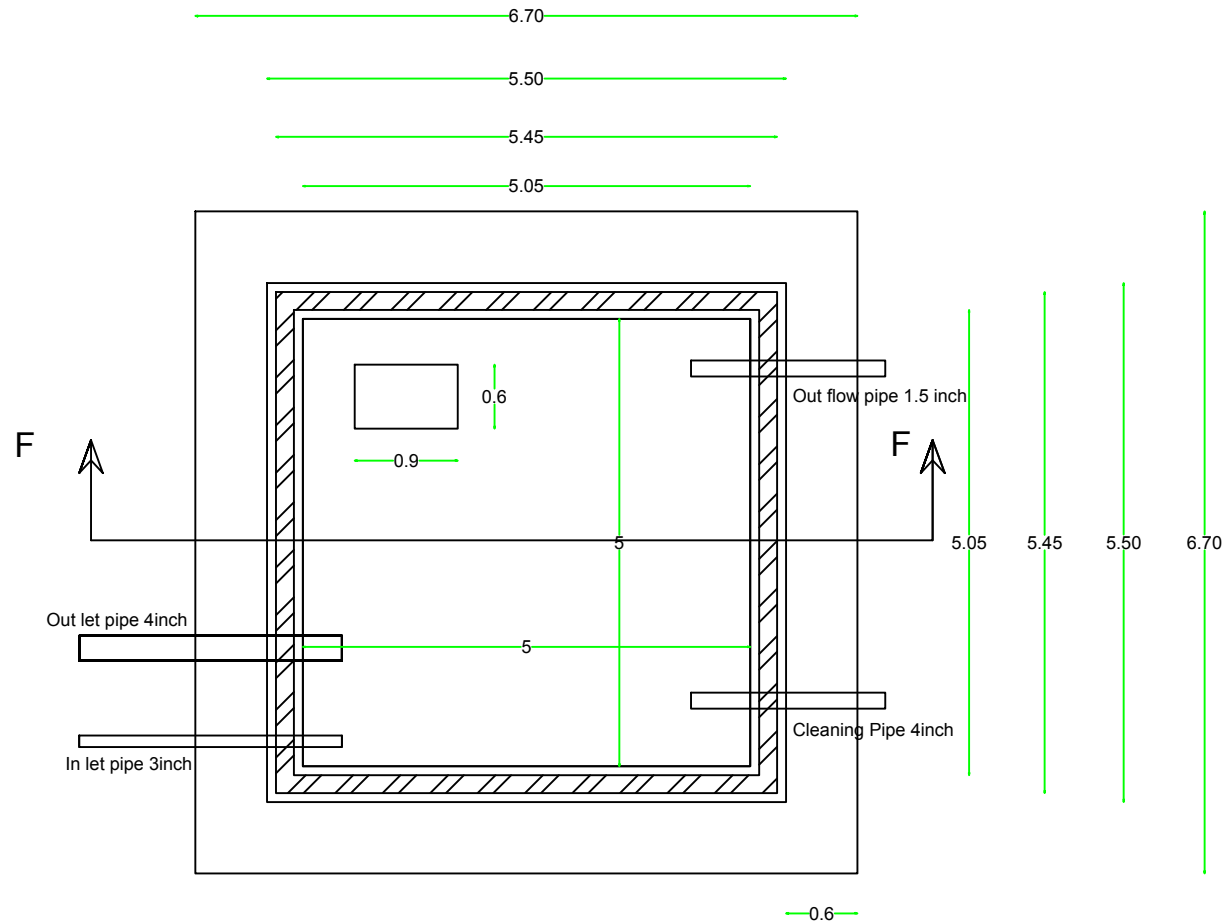


Project Subject

Boundry wall plan&  
section

3

## Plan of Elevated Water Tank



Basic Education and Employable Skill Training

**BEST**

Engineering Department

Project Name

Community Based Gorik  
Solar Piped Scheme

Sheet No

Project Subject

Elevated water tank Plan

4

Surveyed by

Eng Abdul Manan

Project No

Designed by

Design Team

Province

Nangarhar

Drawn by

Baryalai

District

Kuz kunar

Approved by

UNHCR

Village

Gorik



Figure 1: A schematic diagram of a rectangular structure with various dimensions and labels. The structure is a rectangle with a semi-circular notch at the bottom center. Dimensions are given in green and red. Green dimensions include a top width of 5.8, a top horizontal segment of 1.5, a central horizontal width of 5, a vertical height of 5, and a bottom width of 1.5. Red dimensions include a total height of 5.8 and a small vertical offset of 0.35. Labels 'C1' are at the corners, and 'D' is near the top right corner. The diagram shows a cross-section with black and white regions.

The diagram shows a 3-bay 2-story RCC frame structure. The horizontal dimensions (bays) are 2.30 m, 2.30 m, and 2.30 m, with a total width of 7.80 m. The vertical dimensions (stories) are 2.70 m and 2.30 m, with a total height of 5.00 m. The structure is labeled with 'Column' and 'RCC Ring beam'. The joints are labeled with 'A' and 'B'. The dimensions are given in meters (m).

A cross-section diagram of a wall. The wall has a base width of 0.35. The ground level (G.L.) is indicated by a dashed line. The wall height above G.L. is 0.5, and the height below G.L. is 0.6. The wall is composed of a brickwork section above G.L. and a rubble masonry section below G.L. The total height of the wall is 1.1.

Technical drawing of a square component. The drawing includes a top view (left) and a side view (right).

**Top View Dimensions:**

- Overall width: 0.4
- Overall height: 0.5
- Inner square width: 0.312m (tolerance:  $\pm 0.0016m$ )
- Inner square height: 0.312m (tolerance:  $\pm 0.0016m$ )
- Inner square is divided into 8 segments by lines connecting the center to the midpoints of the sides.

**Side View Dimensions:**

- Overall width: 0.35
- Overall height: 0.45
- Top edge is labeled with 0.08 and 0.08.

**Bottom View Dimensions:**

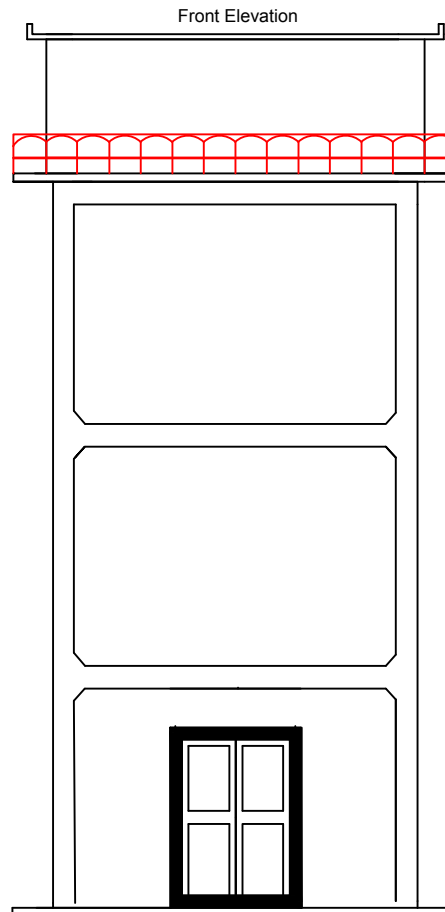
- Overall width: 0.35
- Overall height: 0.45
- Bottom edge is labeled with 156N8mm@20 c/c (tolerance:  $\pm 1.76m$ )




# Plan of Lining for construction of reservoir

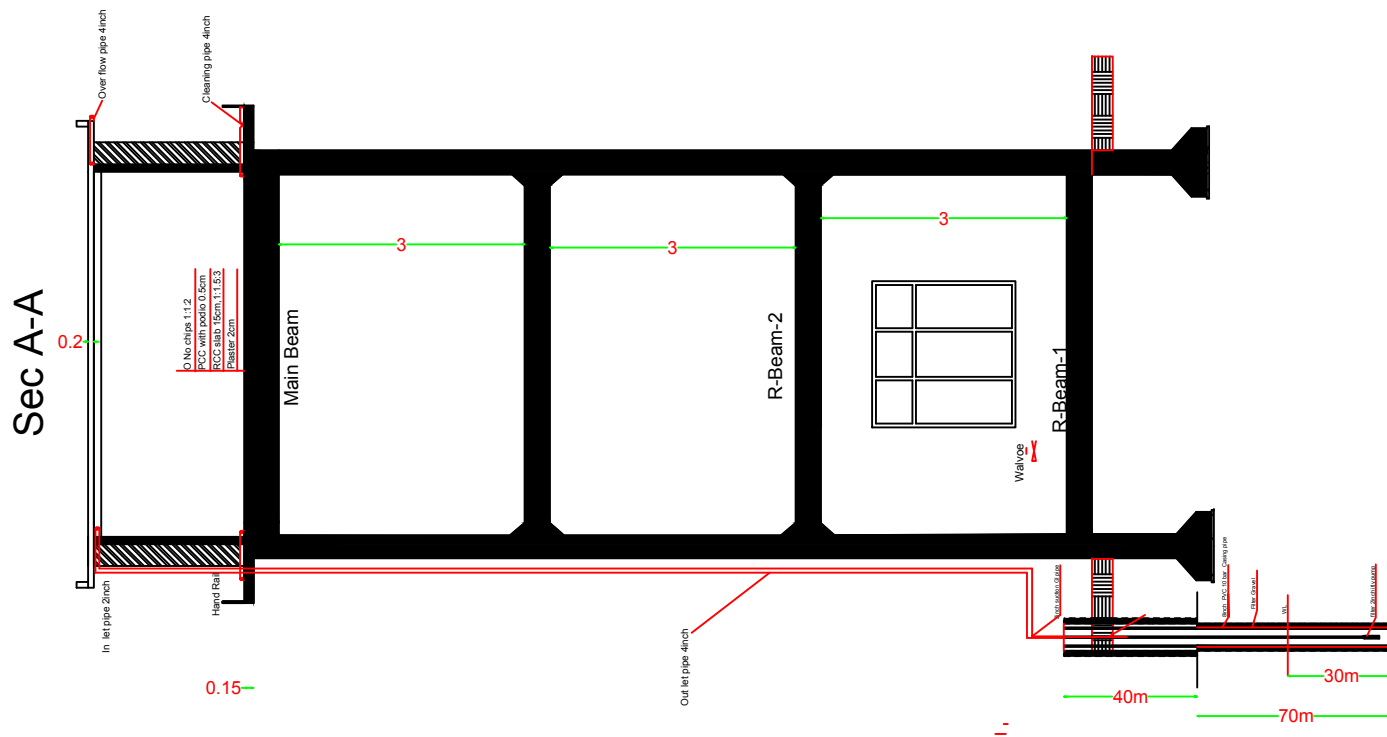






Basic Education and Employable Skill Training					BEST			
Engineering Department						Project Name	Community Based Gorik Solar Piped Scheme	Sheet No
Surveyed by	EngAbdul Manan	Project No					elevation	8
Designed by	Design Team	Province	Nangarhar					
Drawn by	Eng Baryalai	District	Kuz kunar					
Approved by	UNHCR	Village	Gorik					





## Basic Education and Employable Skill Training

# BEST

### Engineering Department

Project Name

Community Based Gorik  
Solar Piped Scheme

Sheet No

Project Subject

well profile

9

Surveyed by

Eng Manan

Project No

Designed by

Design Team

Province

Nangarhar

Drawn by

Eng Baryalai

District

Kuz kunar

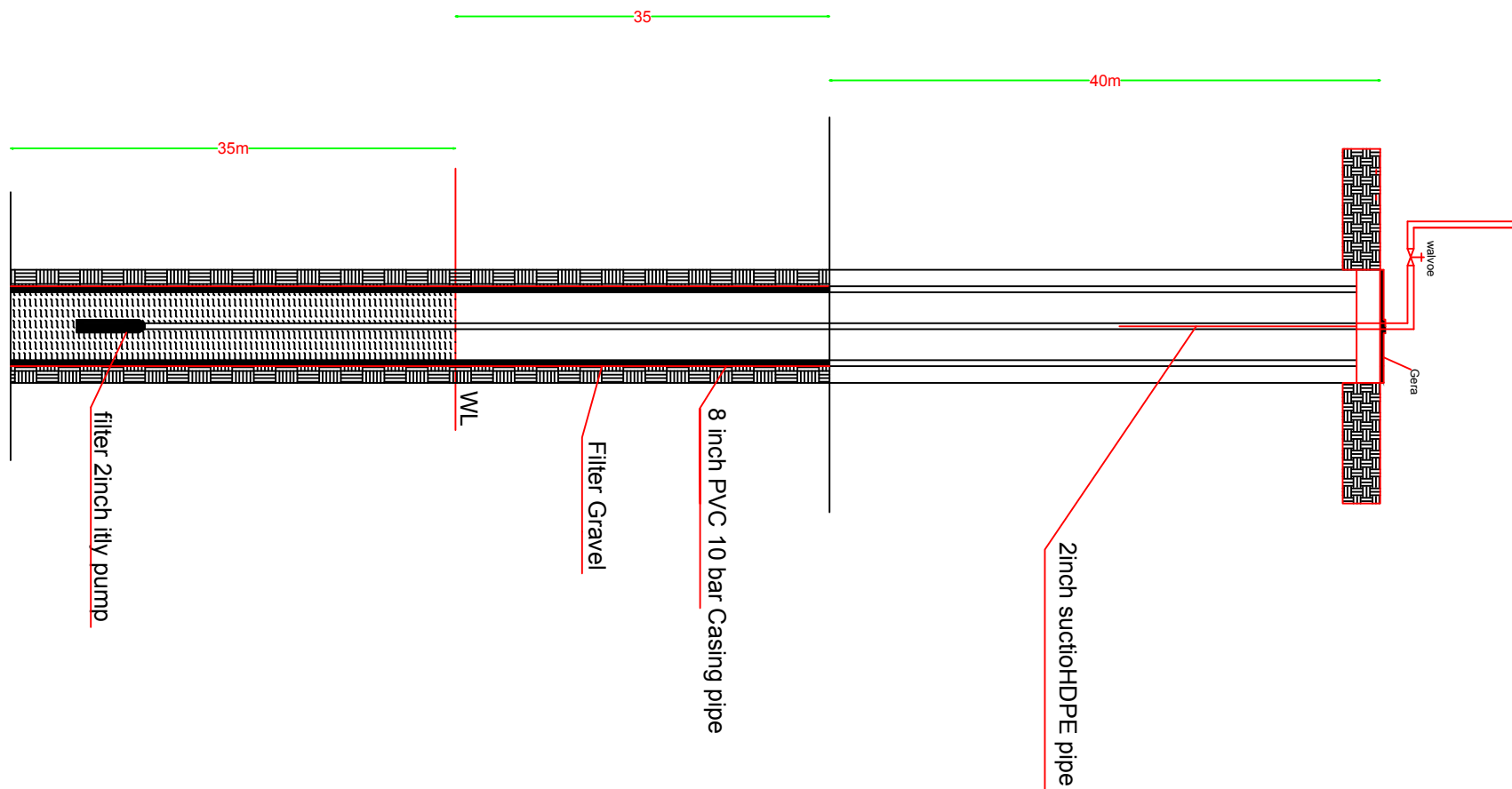
Approved by

UNHCR

Village

Gorik





## Basic Education and Employable Skill Training

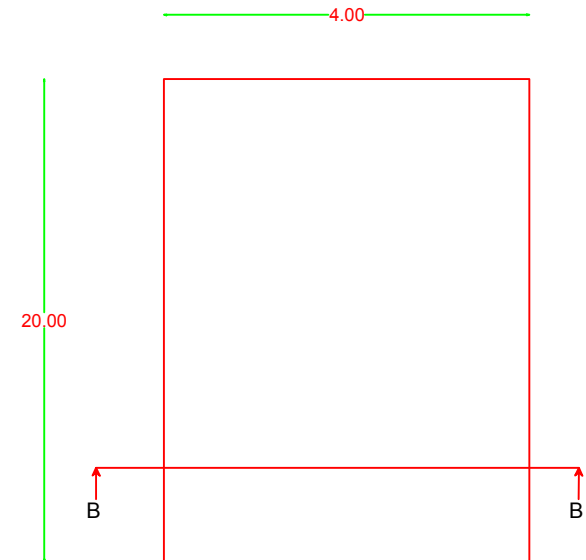
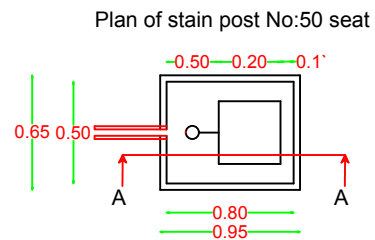
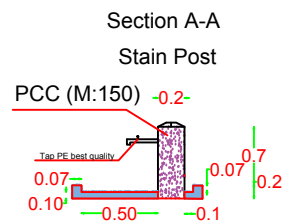
Engineering Department

## BEST

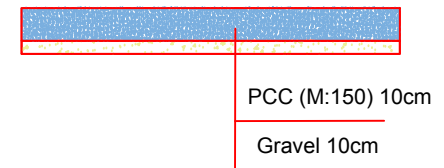
Surveyed by	EngManan	Project No	
Designed by	Design Team	Province	Nangarhar
Drawn by	Eng Baryalai	District	Kuz kunar
Approved by	UNHCR	Village	Gorik



Project Name	Community Based Gorik Solar Piped Scheme	Sheet No
	well profile	
		10



Section B-B Inside of boundary wall pcc



Basic Education and Employable Skill Training

BEST

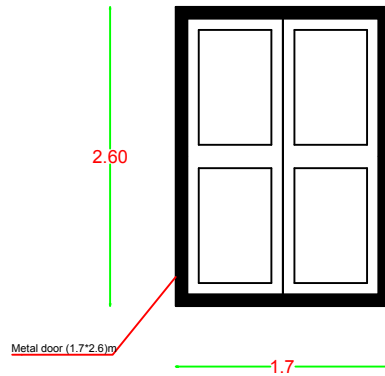
Engineering Department

Surveyed by	Eng Manan	Project No	
Designed by	Design Team	Province	Nangarhar
Checked by	Eng baryalai	District	Kuz kunar
Approved by	UNHCR	Village	Gorik

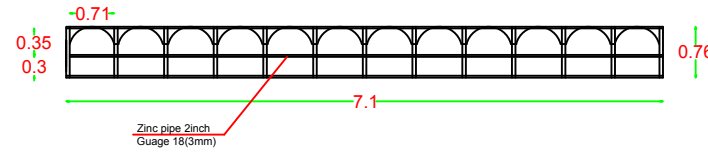


Project Name	Gorik community base pipe scheme	Sheet No
Project Subject	stain post pcc and inside boundary wall pcc	11

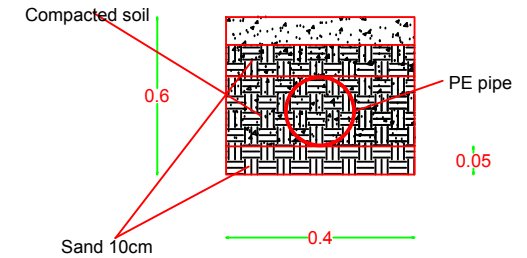
Detail of door



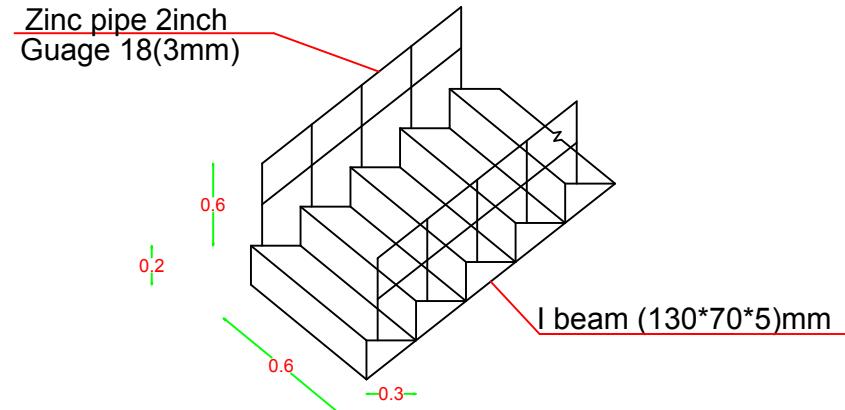
Detail of hand rail



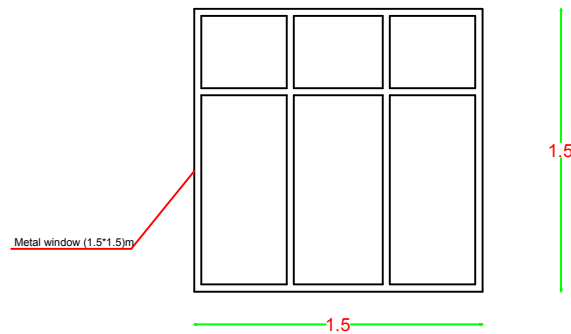
Detail of distribution pipes



Detail of stair



Detail of window



Basic Education and Employable Skill Training

BEST

Engineering Department

Project Name

Community Based Solar  
Powered Pipe scheme

Sheet No

Project Subject

Door& window , stair,  
hand rail detail

12

Surveyed by	Eng Manan	Project No	
Designed by	Design Team	Province	Nangarhar
Checked by	Eng Baryalai	District	Kuz kunar
Approved by	UNHCR	Village	Gorik

