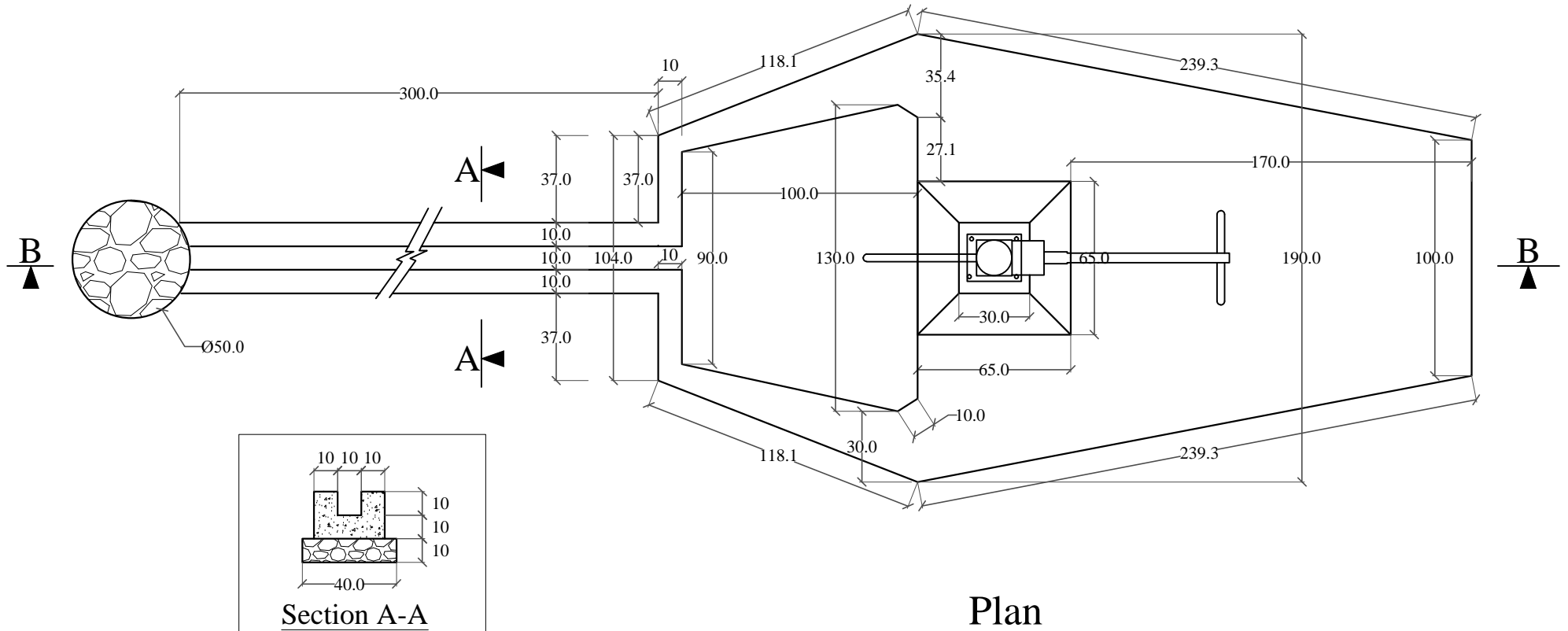


Bore Well with Hand Pump



Note:

- 1- All dimensions are in cm unless otherwise stated.
- 2- All PCC works should be with 1:2:4 mortar unless otherwise stated.
- 3- Curing must be continued upto 28 days.
- 4- Clear and Clean water must be used every where.

Ministry of Rural Rehabilitation and Development	SURVEYED BY		CHECKED BY		SCALE	1:25	PROVINCE		PROJECT NAME <i>Water Supply Project</i>	SHEET NO.	1
CCAP	DESIGNED BY		REVIEWED BY		DATE		DISTRICT				3
<i>Engineering Section (ES)</i>	DRAWN BY		APPROVED BY		DRAWING NO.		VILLAGE				WS
									DRAWING TITLE Bore Well with Hand Pump		